

CAREER

BY GLOWEAVE



CAREER

BY GLOWEAVE

WE ARE PROUD TO INTRODUCE THE 2018 CAREER BY GLOWEAVE RANGE. THE FOCUS OF THIS MODERN OFFER IS A COMPLETE WARDROBE FOR WOMEN AND MEN WITH FULLY CO-ORDINATED PIECES FOR BOTH.

WE HAVE ADDED WOMEN'S SOFT DRESSING TOPS, ADDING A MODERN FEMININE LOOK WHICH EFFORTLESSLY BLENDS WITH OUR TAILORED CLOTHING AND OUR WOVEN SHIRTS.

ALSO NEW FOR 2018 IS OUR PREMIUM POPLIN SHIRT RANGE ACROSS SIX WOMENS AND MENS STYLES.

ALL THE HALLMARKS WHICH DEFINE CAREER BY GLOWEAVE REMAIN –FRESH, CLEAR COLOUR, SUPERB FIT AND EASY CARE FINISHES, ALL DELIVERED IN PREMIUM QUALITY FABRICS AND GARMENTS... ALL IN KEEPING WITH OUR 75 YEARS OF MANUFACTURING EXCELLENCE.

CAREER BY GLOWEAVE – VERSATILE, MODERN, FASHIONABLE, EASY....

THE COMPLETE WARDROBE SOLUTION, REFLECTING YOUR BUSINESS IMAGE.

WWW.GLOWEAVECAREER.COM





ELLIOT

MACHINE WASHABLE OUTERWEAR SEPARATES

Womens Washable Dress	8
Womens Washable One Button Jacket	10
Womens Washable Crop Jacket	12
Womens Washable Cigarette Pant	14
Womens Washable Utility Pant	16
Womens Washable Slim Leg Pant	18
Womens Washable Box Pleat Skirt	20
Womens Washable Pencil Skirt	22
Womens Washable "A" Line Skirt	24
Mens Washable Jacket	26
Mens Washable Pant	28

NAPIER

PREMIUM CHINO PANTS

Premium Chino Pants	30
---------------------	----

CHIFFON WITH KNIT DRAPE TOPS

SOFT DRESSING TOPS

MACKENZIE

Box Pleat Soft Top	32
--------------------	----

ELIZABETH

Inverted V Soft Top	34
---------------------	----



COOL BREEZE TOPS

POLY SPANDEX KNIT TOPS

ROSE

Cool Breeze Knot Top 36

ALEXANDRA

Cool Breeze Round Neck Top 38

SHIRTS

EASY CARE SHIRTS

WESTGARTH

Gingham Long Sleeve Shirts 40

Gingham Short Sleeve Shirts 42

Gingham Long Sleeve Casual Slim Fit Shirts 44

DEGRAVES

Royal Oxford Long Sleeve Shirts 46

Royal Oxford Short Sleeve Casual Slim Fit Shirts 48

SMITH

End On End Long Sleeve Shirts 50

End On End Short Sleeve Casual Slim Fit Shirts 52

FOXTON

Tonal Check Long Sleeve Shirts 54

BELL

Textured Mini Check Long Sleeve Shirts 56

CARSON

Dobby Stripe Shirts 58

COLLINS

Bengal Stripe Long Sleeve Shirts 60

ULTIMATE

Ultimate White Long Sleeve Shirts 62

Ultimate White Short Sleeve Shirts 64

LANDSDOWNE

Micro Step Long Sleeve Shirts 66

NICHOLSON

Premium Poplin Long Sleeve Shirts 68

Premium Poplin Short Sleeve Shirts 70

OXFORD

Oxford Weave Long Sleeve Shirts 72

GUILDFORD

Square Textured Long Sleeve Shirts 74

WESTWOOD

Herringbone Stripe Long Sleeve Shirts 76

BOURKE

Oxford Check Long Sleeve Shirt 78

WINDSOR

Puppy Tooth Long Sleeve Shirts 80

Puppy Tooth Short Sleeve Shirts 82

HARDWARE

Chambray Dobby Long Sleeve Casual Slim Fit Shirts 84

WELLINGTON

Denim Dobby Long Sleeve Career Slim Fit Shirts 86

ICONIC 5045

5045 CHAMBRAY WORKSHIRT

Iconic Glowave 5045 Shirt 88

FIT CHART

90

ELLIOT

ELEGANT AND FLATTERING. OUR NEW CAREER BY GLOWEAVE DRESS ADDS A TOUCH OF STYLE TO THE WORKING WOMAN'S WARDROBE.



NEW



WASH ME



HANG ME



WEAR ME

BLACK

☆ THIS STYLE COORDINATES WITH STYLES ELLIOT 1721WJ CROP JACKET

ELLIOT

WOMENS WASHABLE DRESS

1767WD

- > Womens Sleeveless Dress
- > Contour Panels
- > Rear Zip Closure



FABRIC

Shell: 77% Polyester, 21% Viscose, 2% Spandex

Lining: 100% Polyester Mechanical Stretch



**MACHINE
WASHABLE**



EASY CARE

SIZES

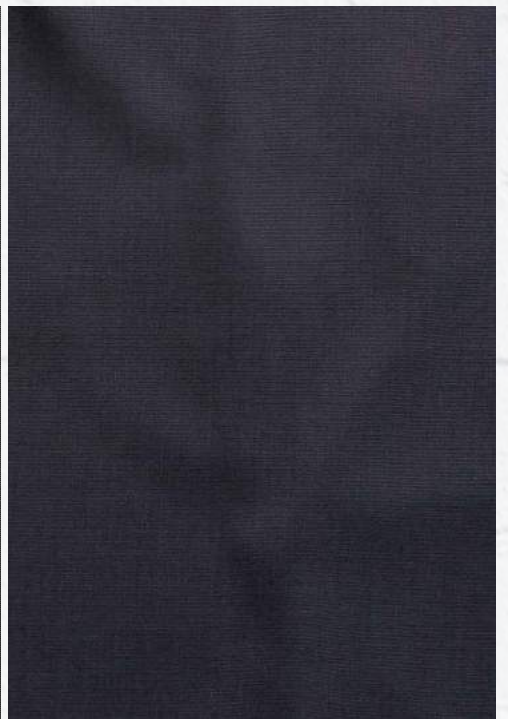
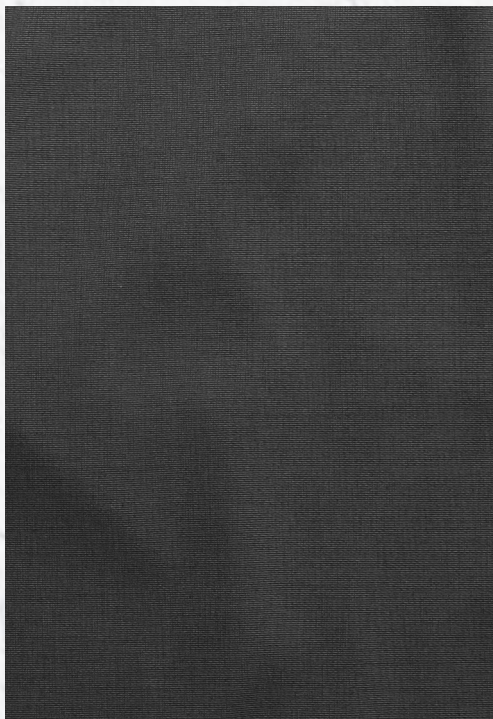
6 - 18

(Refer to Fit Guide P 90)

BLACK

CHARCOAL

NAVY



ELLIOT

WOMENS WASHABLE ONE BUTTON JACKET

1765WJ

- > Womens Tailored Jacket
- > Single Button
- > Single Notch Lapel
- > Side Jet Pockets



FABRIC

Shell: 77% Polyester, 21% Viscose, 2% Spandex

Lining & Pocketing: 100% Polyester



**MACHINE
WASHABLE**



EASY CARE

SIZES

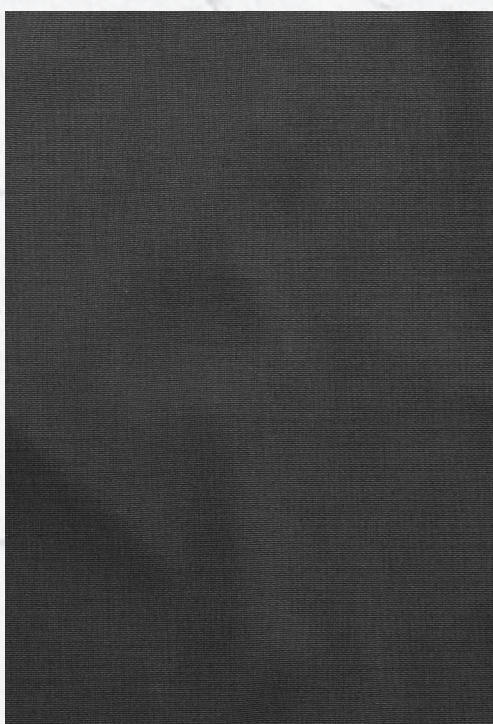
4 - 24

(Refer to Fit Guide P 90)

BLACK

CHARCOAL

NAVY



NEW

TAILORED DEEP ONE
BUTTON JACKET WITH
NOTCH LAPEL AND
THE CONVENIENCE
OF MACHINE
WASHABILITY

ELLIOT



WASH ME



HANG ME



WEAR ME

NAVY

☆ YOU MAY ALSO CONSIDER STYLE ELLIOT 1721WJ CROP JACKET



ELLIOT

ELEGANT CROP
JACKET WITH THE
CONVENIENCE
OF MACHINE
WASHABILITY



WASH ME



HANG ME



WEAR ME

BLACK

☆ YOU MAY ALSO CONSIDER STYLE ELLIOT 1765WJ ONE BUTTON JACKET

ELLIOT

WOMENS WASHABLE CROP JACKET

1721WJ

- > Womens Crop Jacket
- > Single Button
- > Shawl Collar
- > Side Jet Pockets
- > Angle Front & Cropped Back Hem



FABRIC

Shell: 77% Polyester, 21% Viscose, 2% Spandex
Lining & Pocketing: 100% Polyester



**MACHINE
WASHABLE**



EASY CARE

SIZES

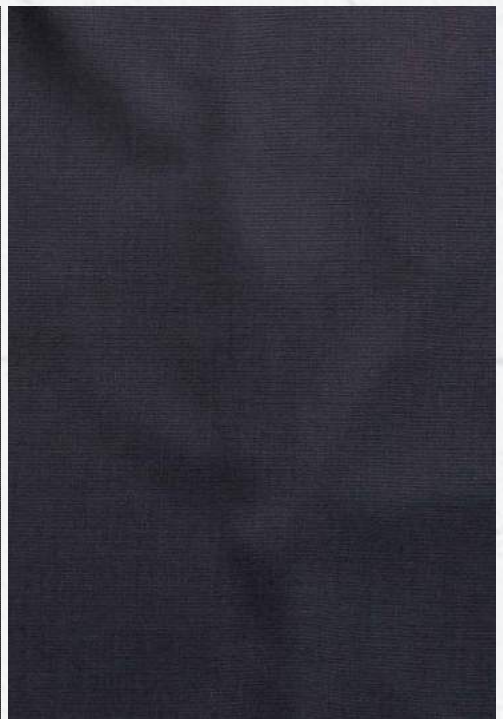
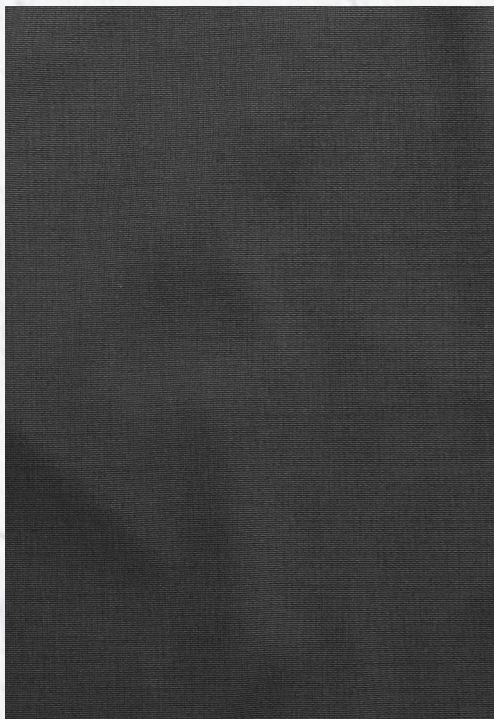
4 - 26

(Refer to Fit Guide P 90)

BLACK

CHARCOAL

NAVY



ELLIOT

WOMENS WASHABLE CIGARETTE PANT

1723WT

- > Womens 7/8 Cigarette Pant
- > Slim Profile
- > Flat Front
- > Angled Side Pockets
- > Cropped Hem



FABRIC

Shell: 77% Polyester, 21% Viscose, 2% Spandex

Lining & Pocketing: 100% Polyester



**MACHINE
WASHABLE**



EASY CARE

SIZES

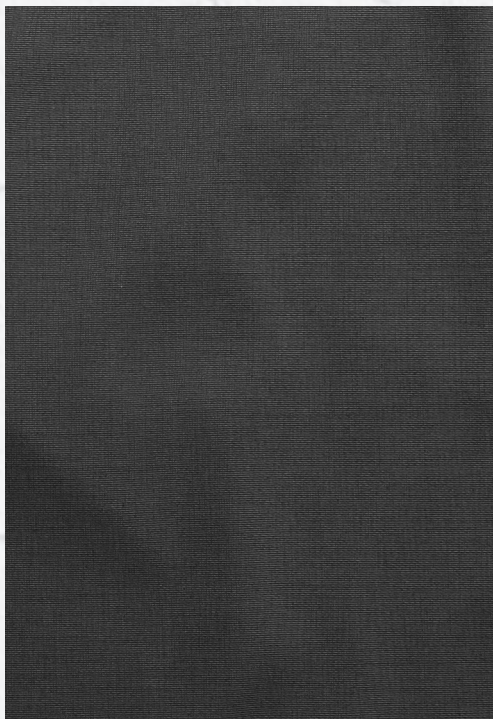
6 - 18

(Refer to Fit Guide P 90)

BLACK

CHARCOAL

NAVY





MACHINE WASHABLE
7/8 LENGTH
CIGARETTE PANT

ELLIOT



WASH ME



HANG ME



WEAR ME

NAVY

☆ YOU MAY ALSO CONSIDER STYLE ELLIOT 1762WT SLIM LEG PANT

ELLIOT

MACHINE WASHABLE
UTILITY PANT WITH
THE ADDED BENEFIT
OF COMFORT WAIST
CONSTRUCTION



WASH ME



HANG ME



WEAR ME

BLACK

☆ YOU MAY ALSO CONSIDER STYLE ELLIOT 1762WT SLIM LEG PANT

ELLIOT

WOMENS WASHABLE UTILITY PANT

1729WT

- > Womens Utility Pant
- > Concealed Comfort Waist
- > Angled Side Pockets
- > Jet Back Pockets
- > Coin Fob Pocket
- > Key Chain Belt Loop



FABRIC

Shell: 77% Polyester, 21% Viscose, 2% Spandex
Lining & Pocketing: 100% Polyester



**MACHINE
WASHABLE**



EASY CARE

SIZES

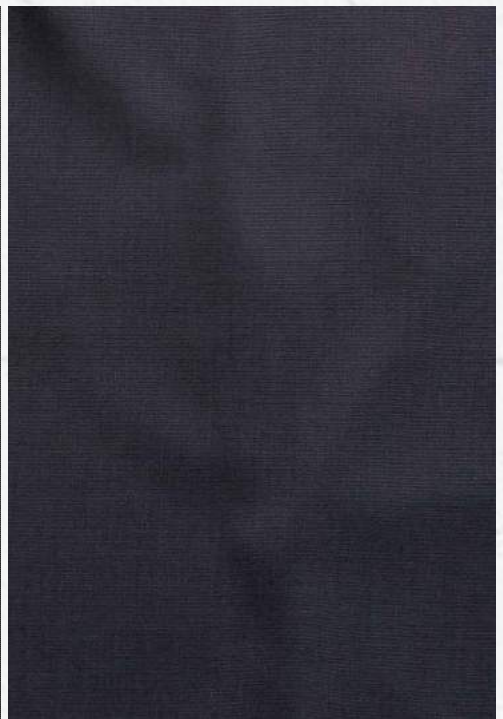
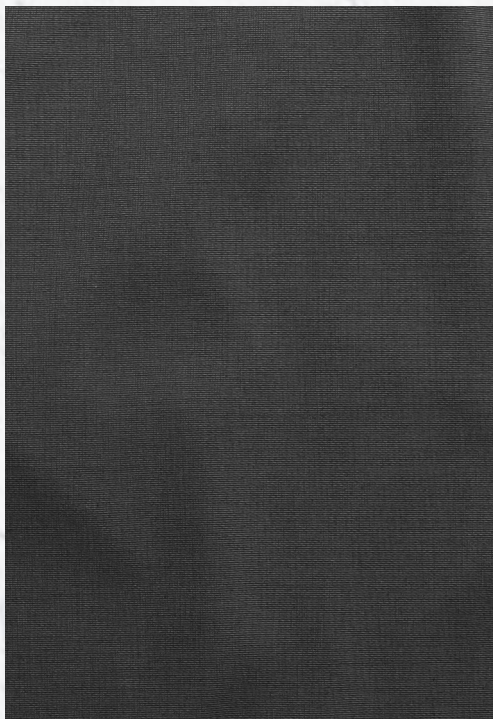
6 - 24

Black also available in size 26 (Refer to Fit Guide P 90)

BLACK

CHARCOAL

NAVY



ELLIOT

WOMENS WASHABLE SLIM LEG PANT

1762WT

- > Womens Slim Leg Pant
- > Concealed Comfort Waist
- > Slim Profile
- > Flat Front
- > Angled Side Pockets
- > Jet Back Pockets
- > Coin Fob Pocket



FABRIC

Shell: 77% Polyester, 21% Viscose, 2% Spandex
Lining & Pocketing: 100% Polyester



**MACHINE
WASHABLE**



EASY CARE

SIZES

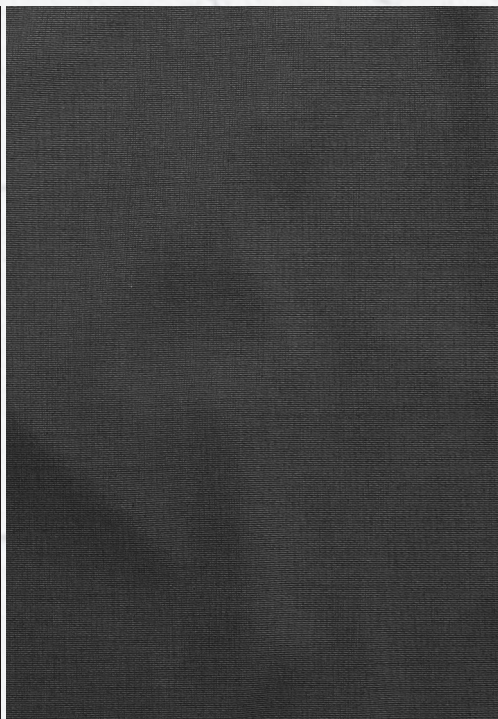
4 - 24

(Refer to Fit Guide P 90)

BLACK

CHARCOAL

NAVY





MACHINE WASHABLE
SLIM LEG SIDE
POCKET PANT

ELLIOT



WASH ME



HANG ME



WEAR ME

NAVY

☆ YOU MAY ALSO CONSIDER STYLE ELLIOT 1729WT UTILITY PANT



ELLIOT

PERFECT FOR THE
WORKING WOMAN.
OUR NEW BOX PLEAT
SKIRT. MACHINE
WASHABLE

NEW



WASH ME



HANG ME



WEAR ME

CHARCOAL

☆ YOU MAY ALSO CONSIDER STYLE ELLIOT 1724WSK PENCIL SKIRT

ELLIOT

WOMENS WASHABLE BOX PLEAT SKIRT

1766WSK

- > Womens Box Pleat Skirt
- > Regular Fit
- > Angled Side Pockets
- > Pleated Front and Back



FABRIC

Shell: 77% Polyester, 21% Viscose, 2% Spandex

Lining & Pocketing: 100% Polyester Mechanical Stretch



**MACHINE
WASHABLE**



EASY CARE

SIZES

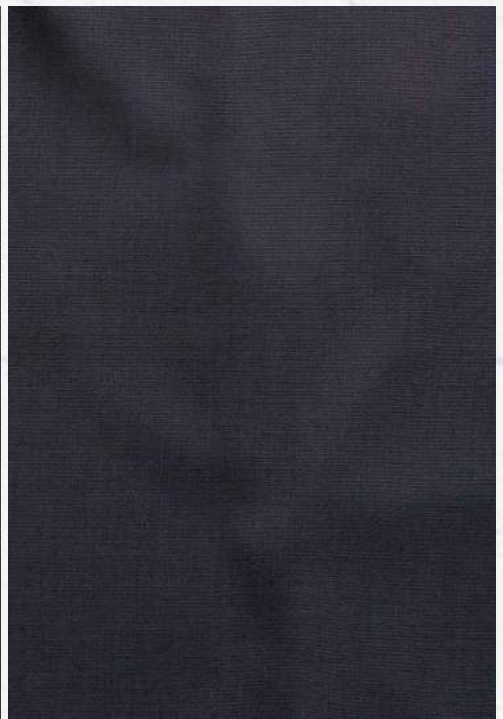
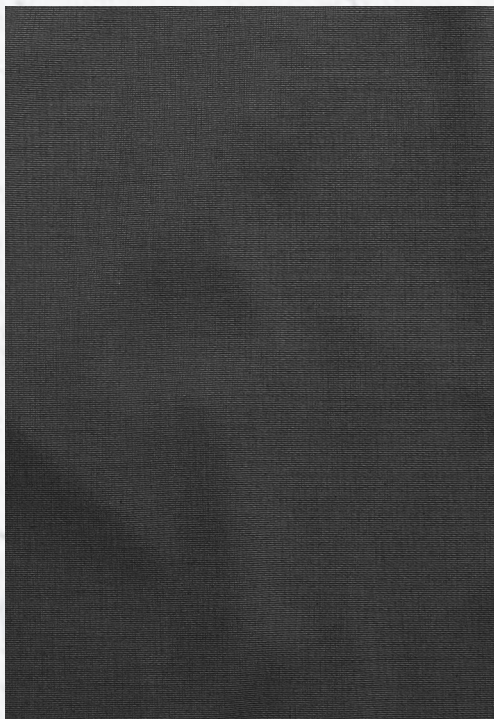
6 - 24

(Refer to Fit Guide P 90)

BLACK

CHARCOAL

NAVY



ELLIOT

WOMENS WASHABLE PENCIL SKIRT

1724WSK

- > Womens Pencil Skirt
- > Slim Fit
- > Curved Waistband
- > Scooped Side Pockets
- > Tapered Hem



FABRIC

Shell: 77% Polyester, 21% Viscose, 2% Spandex

Lining & Pocketing: 100% Polyester Mechanical Stretch



**MACHINE
WASHABLE**



EASY CARE

SIZES

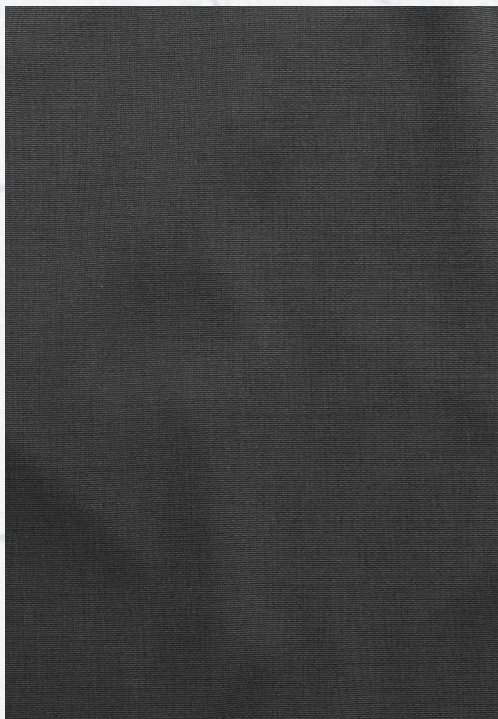
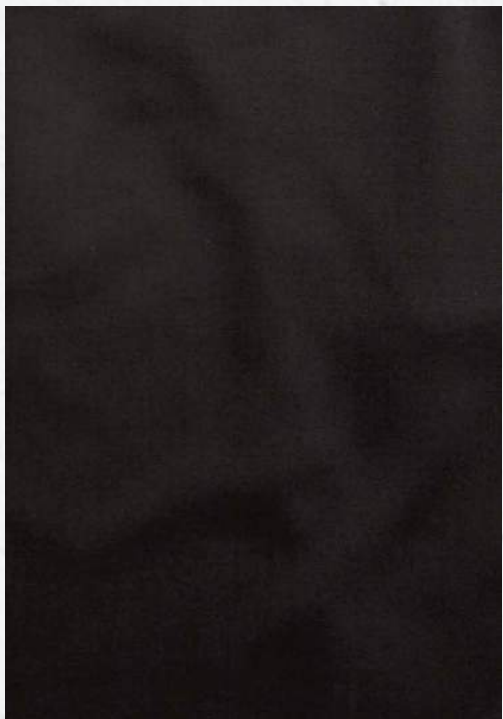
4 - 24

(Refer to Fit Guide P 90)

BLACK

CHARCOAL

NAVY





STYLISH SLIM
PROFILE PENCIL
SKIRT. MACHINE
WASHABLE

ELLIOT



WASH ME



HANG ME



WEAR ME

NAVY

☆ YOU MAY ALSO CONSIDER STYLE ELLIOT 1766WSK BOX PLEAT SKIRT



ELLIOT

MACHINE WASHABLE
"A" LINE WITH THE
ADDED BENEFIT OF
COMFORT WAIST
CONSTRUCTION



WASH ME



HANG ME



WEAR ME

NAVY

☆ YOU MAY ALSO CONSIDER STYLE ELLIOT 1766WSK BOX PLEAT SKIRT

ELLIOT

WOMENS WASHABLE "A" LINE SKIRT

1725WSK

- > Womens "A" Line Skirt
- > Concealed Comfort Waist
- > Slim Waistband
- > Angled Side Pockets



FABRIC

Shell: 77% Polyester, 21% Viscose, 2% Spandex

Lining & Pocketing: 100% Polyester Mechanical Stretch



**MACHINE
WASHABLE**



EASY CARE

SIZES

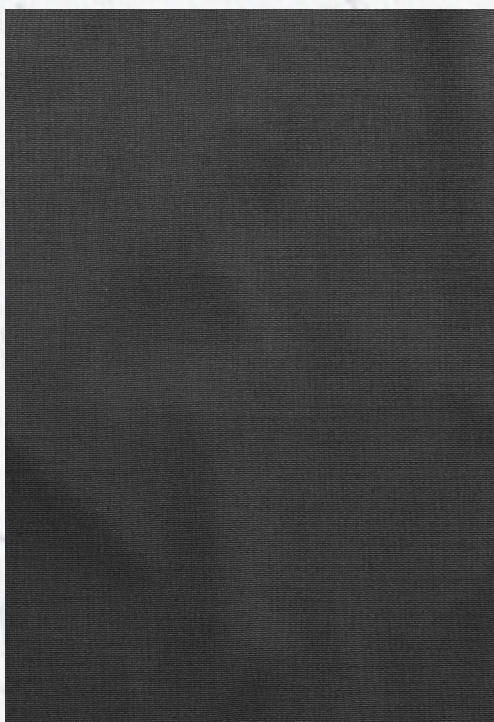
6 - 24

(Refer to Fit Guide P 90)

BLACK

CHARCOAL

NAVY



ELLIOT

MENS WASHABLE JACKET

1728MJ

- > Mens Two Button Jacket
- > Notch Lapel
- > Flap Pockets
- > Double Vent Back



FABRIC

Shell: 77% Polyester, 21% Viscose, 2% Spandex

Lining & Pocketing: 100% Polyester



**MACHINE
WASHABLE**



EASY CARE

SIZES

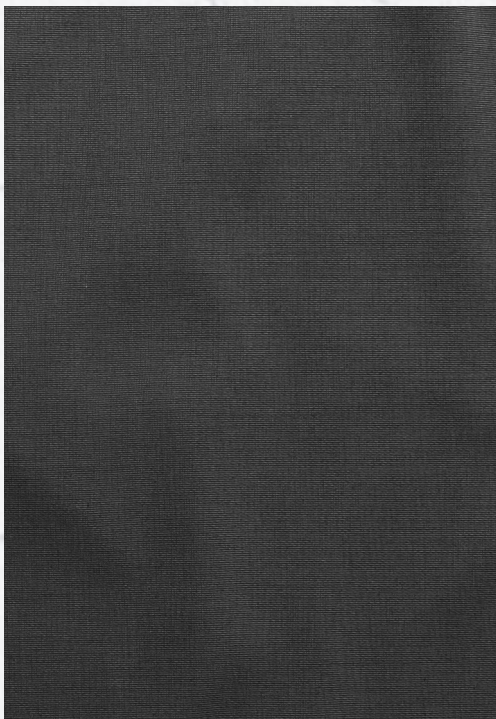
87 - 127

(Refer to Fit Guide P 90)

BLACK



CHARCOAL



NAVY





SUPERBLY TAILORED
MENS MACHINE
WASHABLE JACKET

ELLIOT



WASH ME



HANG ME



WEAR ME

CHARCOAL

☆ THIS STYLE COORDINATES WITH STYLES ELLIOT 1722MJ MENS PANT



ELLIOT

MACHINE
WASHABLE
COMFORT
WAIST PANT



WASH ME



HANG ME



WEAR ME

BLACK

☆ THIS STYLE COORDINATES WITH STYLES ELLIOT 1728MJ MENS JACKET

ELLIOT

MENS WASHABLE PANT

1722MT

- > Mens Flat Front Trouser
- > Concealed Comfort Waist
- > Angled Side Pockets
- > Jet Back Pockets
- > Coin Fob Pocket
- > Key Chain Belt Loop



FABRIC

Shell: 77% Polyester, 21% Viscose, 2% Spandex

Lining & Pocketing: 100% Polyester



**MACHINE
WASHABLE**



EASY CARE

SIZES

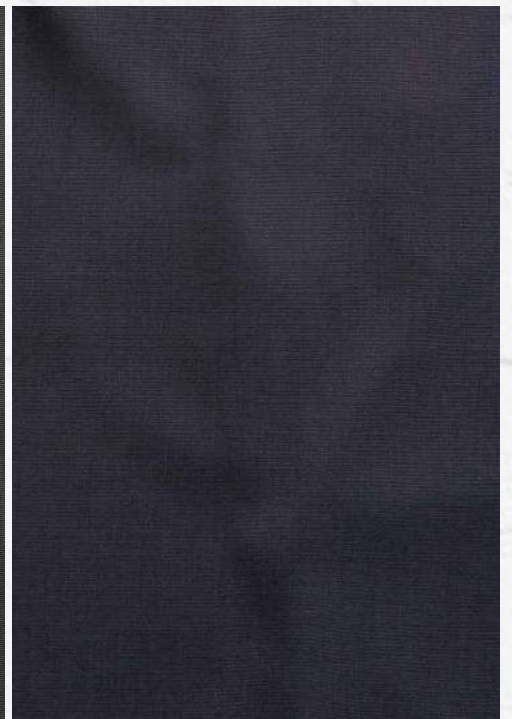
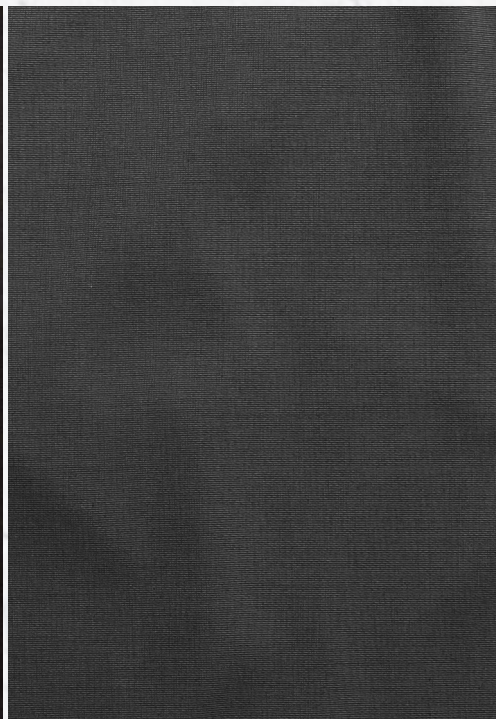
72 - 132

(Refer to Fit Guide P 90)

BLACK

CHARCOAL

NAVY



NAPIER

PREMIUM CHINO PANTS

1764WT WOMENS CHINO PANT

- > Relaxed Fit
- > Side Pockets
- > Double Back Pockets
- > Coin Fob Pocket
- > Key Chain Belt Loop
- > Contrast Chambray Turn Up Hem Facing Detail

1764MT MENS CHINO PANT

- > Relaxed Fit
- > Side Pockets
- > Double Back Pockets
- > Coin Fob Pocket
- > Key Chain Belt Loop
- > Contrast Chambray Turn Up Hem Facing Detail

FABRIC

97% Cotton, 3% Spandex with Garment Wash



EASY CARE

SIZES

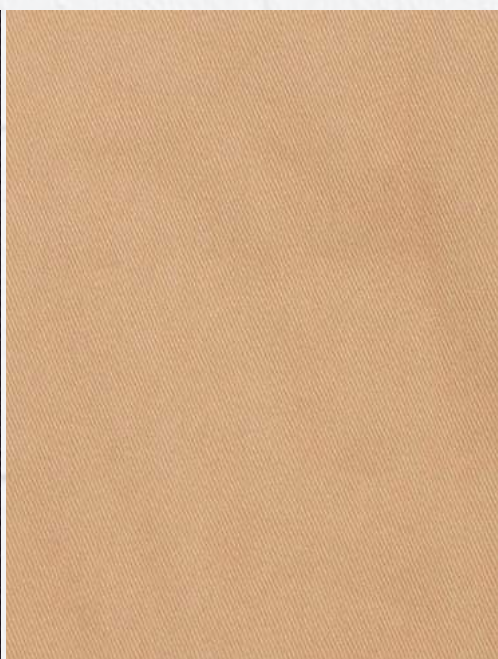
WOMENS: 4 - 24 MENS: 28 - 42

(Refer to Fit Guide P 90)

BLACK

TAN

NAVY





NAPIER

MACKENZIE

NEW



☆ THIS STYLE COORDINATES WITH STYLES WESTGARTH & CARSON

NAVY



MACKENZIE

BOX PLEAT SOFT TOP

1886WS

- > Womens Cap Sleeve Drape Top
- > Drape Top
- > Box Pleat Front
- > Round Neck
- > Double Layer Chiffon Front with Viscose Slub Knit Back



FABRIC

Front: 100% Polyester Chiffon

Back: 95% Viscose, 5% Elastane Slub Knit



EASY CARE

SIZES

6 - 20

(Refer to Fit Guide P 90)

BLACK

NAVY

TEAL

RED

IVORY



ELIZABETH

INVERTED V SOFT TOP

1885WS

- > Womens Short Sleeve Drape Top
- > Inverted Pleat Front
- > Vee Neck
- > Double Layer Chiffon Front with Viscose Slub Knit Back



FABRIC

Front: 100% Polyester Chiffon

Back: 95% Viscose, 5% Elastane Slub Knit



EASY CARE

SIZES

6 - 20

(Refer to Fit Guide P 90)

BLACK

NAVY

TEAL

RED





NEW

ELIZABETH

RED

☆ THIS STYLE COORDINATES WITH STYLES DESGRAVES & CARSON



ROSE

NEW



☆ THIS STYLE COORDINATES WITH STYLES WESTGARTH & CARSON

TEAL



ROSE

COOL BREEZE KNOT TOP

1889WS

- > Womens Short Sleeve Knot Detail Knit Top
- > Vee Neck
- > "Cool Breeze" Comfort Knit Fabric



FABRIC

95% Polyester 5% Elastane Knit



EASY CARE

SIZES

XS - 4XL

(Refer to Fit Guide P 90)

BLACK

RED

TEAL



ALEXANDRA

COOL BREEZE ROUND NECK TOP

1890WS

- > Womens Short Sleeve Multi Pleat Knit Top
- > Rounded Neck
- > "Cool Breeze" Comfort Knit Fabric



FABRIC

95% Polyester 5% Elastane Knit



EASY CARE

SIZES

XS - 4XL

(Refer to Fit Guide P 90)

BLACK



RED



TEAL





NEW

ALEXANDRA

BLACK

☆ THIS STYLE COORDINATES WITH STYLES DESGRAVES & CARSON





☆ THIS STYLE COORDINATES WITH STYLES ELIZABETH, MACKENZIE, ROSE & ALEXANDRA

WESTGARTH

GINGHAM LONG SLEEVE SHIRTS

1637L MENS LONG SLEEVE GINGHAM SHIRT

- > Career Contemporary Fit
- > Placket Front
- > Classic Collar
- > Convertible Cuff
- > Left Chest Pocket

1637WL WOMENS LONG SLEEVE GINGHAM SHIRT

- > Career Contemporary Fit
- > Placket Front
- > Classic Collar
- > Front Darts
- > Action Back Pleats
- > Hidden Modesty Button

FABRIC

60% Cotton, 40% Polyester with Silk Protein & Easy Iron Finish



EASY IRON



COTTON RICH



SILK PROTEIN FINISH



CAREER CONTEMPORARY FIT

SIZES

WOMENS: 6 - 28 MENS: 37 - 56 (Navy, Black, Teal available Size 58)

(Refer to Fit Guide P 90)

NAVY



SKY



GREY



TEAL



CRIMSON



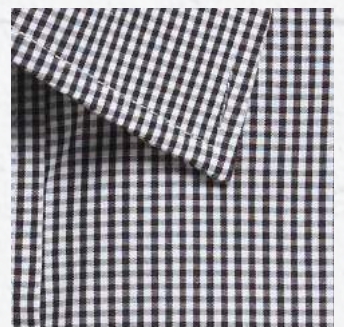
PINK



LILAC



BLACK



WESTGARTH

GINGHAM SHORT SLEEVE SHIRTS

1637WS WOMENS SHORT SLEEVE GINGHAM SHIRT

- > Career Contemporary Fit
- > Placket Front
- > Classic Collar
- > Action Back Pleats
- > Hidden Modesty Button

1637S MENS SHORT SLEEVE GINGHAM SHIRT

- > Career Contemporary Fit
- > Placket Front
- > Classic Collar
- > Left Chest Pocket

1637WZ WOMENS 3/4 SLEEVE GINGHAM SHIRT

- > Career Contemporary Fit
- > Placket Front
- > Classic Collar
- > Front Darts,
- > Action Back Pleats
- > Hidden Modesty Button
- > Bias Cut Cuff Detail

FABRIC

60% Cotton, 40% Polyester with Silk Protein & Easy Iron Finish



EASY IRON



COTTON RICH



SILK PROTEIN FINISH



CAREER CONTEMPORARY FIT

SIZES

WOMENS: 6 - 30 MENS: 37 - 54

(Refer to Fit Guide P 90)

NAVY (ALL STYLES)



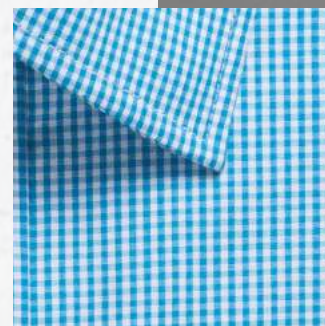
SKY (ALL STYLES)



GREY (ALL STYLES)



TEAL (ALL STYLES)



CRIMSON (1637WS ONLY)



PINK (1637WS ONLY)



LILAC (1637WS ONLY)



BLACK (1637WS ONLY)





1637WS

1637S

1637WZ

☆ THIS STYLE COORDINATES WITH STYLES ELIZABETH, MACKENZIE, ROSE & ALEXANDRA





☆ THIS STYLE COORDINATES WITH STYLES SMITH & DESGRAVES

TAN

WESTGARTH

GINGHAM LONG SLEEVE CASUAL SLIM FIT SHIRTS

1637HL MENS LONG SLEEVE GINGHAM SHIRT

- > Casual Slim Fit
- > Placket Front
- > Concealed Button
Down Collar
- > Left Chest Pocket
- > Roll Up Sleeve Tabs
- > Adjustable Cuff

1637WHL WOMENS LONG SLEEVE GINGHAM SHIRT

- > Casual Slim Fit
- > Double Fold Front
- > Classic Collar
- > Left Chest Pocket
- > Front & Back Darts

FABRIC

60% Cotton, 40% Polyester with Silk Protein & Easy Iron Finish



EASY IRON



COTTON RICH



SILK PROTEIN
FINISH



CASUAL
SLIM FIT

SIZES

WOMENS: 6 - 20 **MENS:** S - 3XL

(Refer to Fit Guide P 90)

BLACK

NAVY



DEGRAVES

ROYAL OXFORD LONG SLEEVE SHIRTS

1710L MENS LONG SLEEVE

- > Career Contemporary Fit
- > Placket Front
- > Classic Collar
- > Convertible Cuff

1710WL WOMENS ¾ SLEEVE

- > Career Contemporary Fit
- > Placket Front,
- > Classic Collar
- > Front Darts
- > Action Back Pleats
- > Hidden Modesty Button
- > Split Cuff Detail

FABRIC

60% Cotton, 40% Polyester with Easy Iron Finish and Silk Protein



EASY IRON



COTTON RICH



SILK PROTEIN
FINISH



CAREER
CONTEMPORARY
FIT

SIZES

WOMENS: 6 - 26 MENS: 37 - 50

1710L: Navy also available in sizes 52 - 54 (Refer to Fit Guide P 90)

BLACK



NAVY



RED







☆ THIS STYLE COORDINATES WITH STYLES SMITH & DESGRAVES

DEGRAVES

ROYAL OXFORD SHORT SLEEVE CASUAL SLIM FIT SHIRTS

1710WHS WOMENS SHORT SLEEVE

- > Casual Slim Fit
- > Front & Back Darts
- > Double Fold Front
- > Classic Collar
- > Left Chest Pocket

1710HS MENS SHORT SLEEVE

- > Casual Slim Fit
- > Placket Front
- > Classic Collar
- > Left Chest Pocket

FABRIC

60% Cotton, 40% Polyester with Easy Iron Finish and Silk Protein



EASY IRON



COTTON RICH



CASUAL
SLIM FIT

SIZES

WOMENS: 6 - 20 MENS: S - 3XL

(Refer to Fit Guide P 90)

BLACK

NAVY



SMITH

END ON END LONG SLEEVE SHIRTS

1253L MENS LONG SLEEVE

- > Career Contemporary Fit
- > Placket Front
- > Classic Collar
- > Convertible Cuff
- > Left Chest Pocket

1253WL WOMENS ¾ SLEEVE

- > Career Contemporary Fit
- > Double Fold Front
- > Front & Back Darts
- > Classic Collar
- > Split Cuff Detail

FABRIC

65% Polyester, 35% Cotton, Easy Iron



EASY IRON



POLYESTER
COTTON



CAREER
CONTEMPORARY
FIT

SIZES

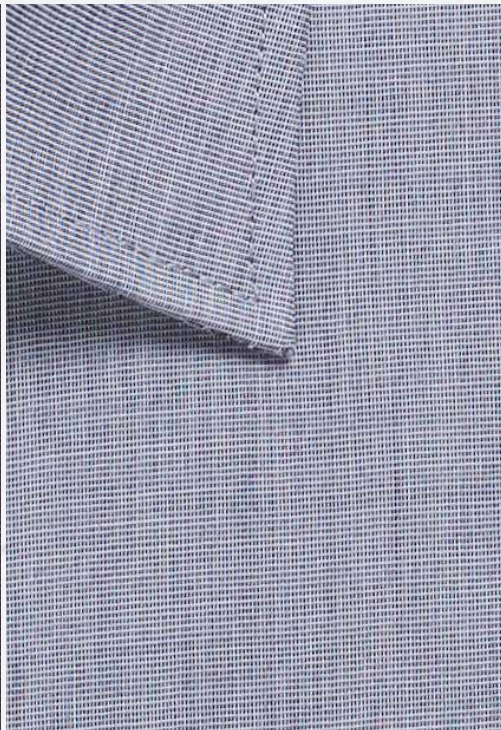
WOMENS: 6 - 26 MENS: 37 - 54

(Refer to Fit Guide P 90)

SLATE



SILVER





SMITH

SLATE

☆ YOU MAY ALSO CONSIDER STYLES WELLINGTON & SMITH



SMITH



☆ YOU MAY ALSO CONSIDER STYLES DESGRAVES & WESTGARTH

SILVER

SMITH

END ON END SHORT SLEEVE CASUAL SLIM FIT SHIRTS

1253WHS WOMENS SHORT SLEEVE

- > Casual Slim Fit
- > Double Fold Front
- > Front & Back Darts
- > Classic Collar
- > Contrast Back Yoke Tab
- > Contrast Under Sleeve Hem Facing
- > Contrast Side Seam Gussets
- > Left Chest Pocket

1253HS MENS SHORT SLEEVE

- > Casual Slim Fit
- > Placket Front
- > Classic Collar with Concealed Button Down
- > Contrast Back Yoke Tab
- > Contrast Under Sleeve Hem Facing
- > Contrast Side Seam Gussets
- > Left Chest Pocket

FABRIC

65% Polyester, 35% Cotton, Easy Iron



EASY IRON



POLYESTER
COTTON



CASUAL
SLIM FIT

SIZES

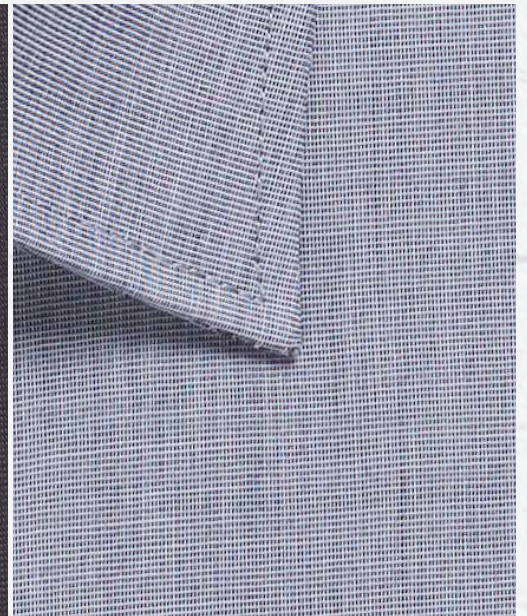
WOMENS: 6 - 24 **MENS:** S - 3XL

(Refer to Fit Guide P 90)

SLATE



SILVER



FOXTON

TONAL CHECK LONG SLEEVE SHIRTS

1711WL WOMENS ¾ SLEEVE

- > Career Contemporary Fit
- > Placket Front
- > Classic Collar
- > Front Darts
- > Action Back Pleats
- > Hidden Modesty Button
- > Bias Cut Cuff Detail

1711L MENS LONG SLEEVE

- > Career Contemporary Fit
- > Placket Front
- > Spread Collar
- > Adjustable Cuff

FABRIC

60% Cotton, 40% Polyester with Easy Iron Finish and Silk Protein



EASY IRON



COTTON RICH



SILK PROTEIN
FINISH



CAREER
CONTEMPORARY
FIT

SIZES

WOMENS: 6 - 26 **MENS:** 37 - 50

(Refer to Fit Guide P 90)

BLUE





BLUE

☆ YOU MAY ALSO CONSIDER STYLES WELLINGTON & SMITH



BELL



☆ YOU MAY ALSO CONSIDER STYLES LANDSDOWNE & WESTWOOD

BLUE

BELL

TEXTURED MINI CHECK LONG SLEEVE SHIRTS

1295L MENS LONG SLEEVE

- > Career Contemporary Fit
- > Placket Front
- > Classic Collar,
- > Convertible Cuff
- > Left Chest Pocket

1295WL LONG SLEEVE

- > Career Contemporary Fit
- > Front & Back Darts
- > Double Fold Front
- > Classic Collar
- > Square Cuff

FABRIC

65% Polyester, 35% Cotton, Easy Iron



EASY IRON



POLYESTER/
COTTON



CAREER
CONTEMPORARY
FIT

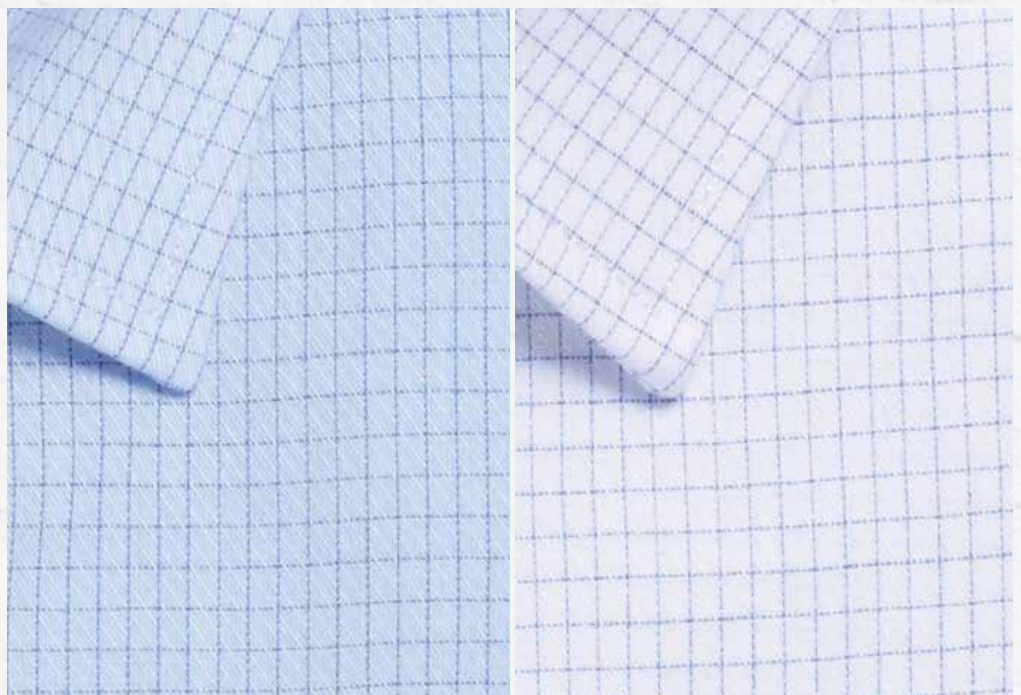
SIZES

WOMENS: 8 - 24 **MENS:** 37 - 50

(Refer to Fit Guide P 90)

BLUE

WHITE



CARSON

DOBBY STRIPE SHIRTS

1891WS WOMENS SHORT SLEEVE

- > Career Contemporary Fit
- > Placket Front
- > Front Darts
- > Classic Collar
- > Action Back Pleats
- > Hidden Modesty Button

1891WL WOMENS LONG SLEEVE

- > Career Contemporary Fit
- > Placket Front
- > Front Darts
- > Classic Collar
- > Action Back Pleats
- > Hidden Modesty Button

1891L MENS LONG SLEEVE

- > Career Contemporary Fit
- > Placket Front
- > Classic Collar
- > Convertible Cuff
- > Left Chest Pocket

FABRIC

60% Cotton, 40% Polyester with Silk Protein & Easy Iron Finish



EASY IRON



COTTON RICH



SILK PROTEIN FINISH



CAREER CONTEMPORARY FIT

SIZES

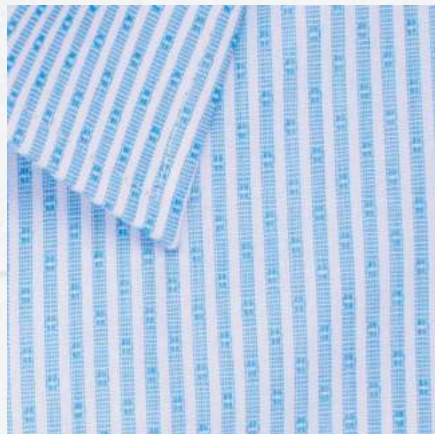
WOMENS: 6 - 26 MENS: 37 - 54

(Refer to Fit Guide P 90)

NAVY



TEAL



RED





CARSON

1891WS

1891WL

1891L

☆ THIS STYLE COORDINATES WITH STYLES ELIZABETH, MACKENZIE, ROSE & ALEXANDRA



COLLINS



☆ YOU MAY ALSO CONSIDER STYLES CARSON & WESTGARTH

CHARCOAL

COLLINS

BENGAL STRIPE LONG SLEEVE SHIRTS

1376L MENS LONG SLEEVE

- > Career Slim Fit
- > Placket Front
- > Classic Collar
- > Adjustable Cuff

1376WL WOMENS LONG SLEEVE

- > Career Slim Fit
- > Fly Front, Front & Back Darts
- > Hidden Modesty Button
- > Classic Collar
- > Square Cuff

FABRIC

65% Polyester, 35% Cotton Silk Protein Finish, Easy Iron



EASY IRON



POLYESTER/
COTTON



SILK PROTEIN
FINISH



CAREER
SLIM FIT

SIZES

WOMENS: 6 - 26 MENS: S - 4XL

(Refer to Fit Guide P 90)

CHARCOAL



BLUE



RED



ULTIMATE

ULTIMATE WHITE LONG SLEEVE SHIRTS

1908L MENS LONG SLEEVE

- > Career Slim Fit
- > Placket Front
- > Back Darts
- > Classic Collar
- > Convertible Cuff
- > Left Chest Pocket

1908WL WOMENS LONG SLEEVE

- > Career Slim Fit
- > Placket Front
- > Front & Back Darts
- > Hidden Modesty Button
- > Classic Collar
- > Adjustable Cuff

1708L MENS LONG SLEEVE

- > Career Contemporary Fit
- > Placket Front
- > Spread Collar
- > Convertible Cuff

FABRIC

60% Cotton, 40% Polyester, Easy Iron and Silk Protein



EASY IRON



COTTON RICH



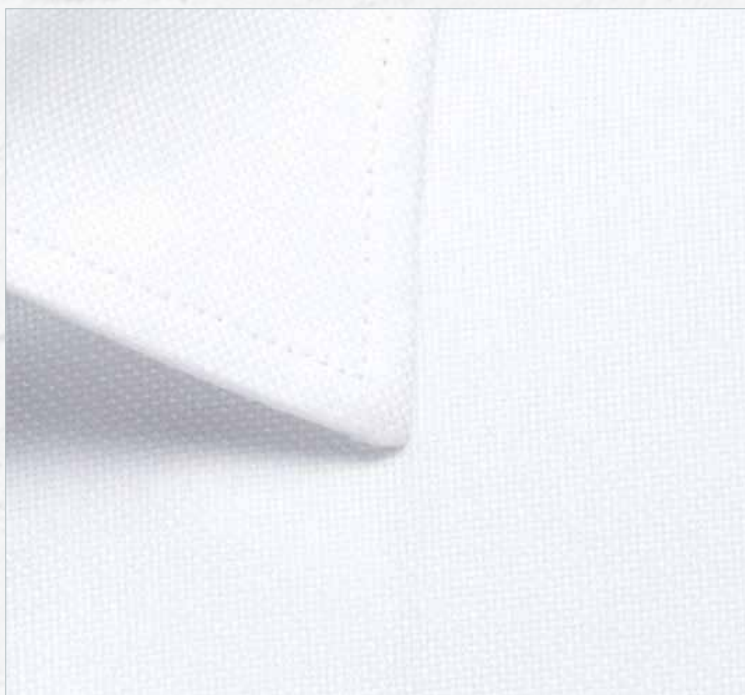
SILK PROTEIN
FINISH

SIZES

1908WL: 6 - 26 **1908L:** S - 6XL **1708L:** 37 - 50

(Refer to Fit Guide P 90)

WHITE





ULTIMATE

1908L

1908WL

1708L

☆ YOU MAY ALSO CONSIDER STYLES GUILDFORD & NICHOLSON



ULTIMATE



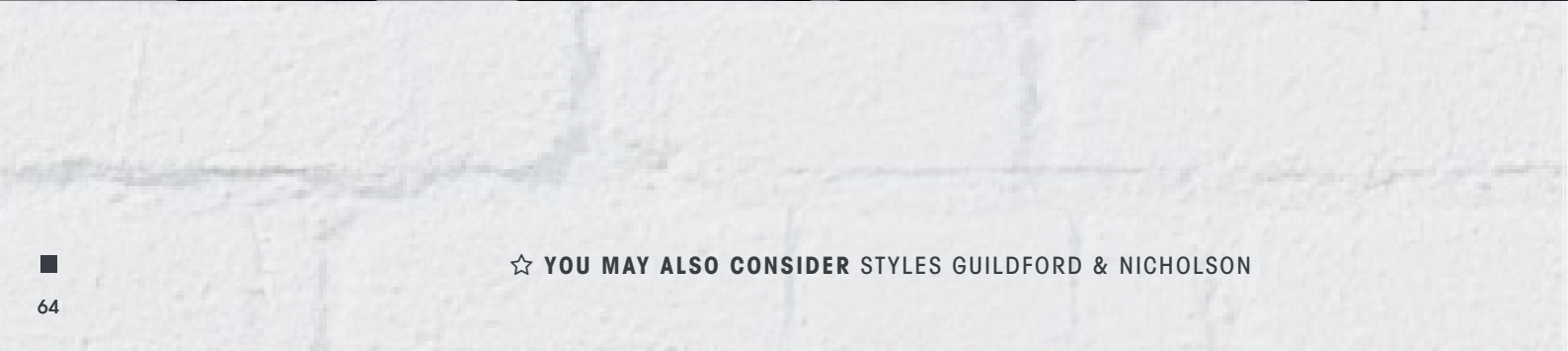
1908WS



1908S



1908WZ



☆ YOU MAY ALSO CONSIDER STYLES GUILDFORD & NICHOLSON

ULTIMATE

ULTIMATE WHITE SHORT SLEEVE SHIRTS

1908WS WOMENS SHORT SLEEVE

- > Career Slim Fit
- > Placket Front
- > Front & Back Darts
- > Hidden Modesty Button
- > Classic Collar
- > Adjustable Cuff

1908S MENS SHORT SLEEVE

- > Career Slim Fit
- > Placket Front
- > Classic Collar
- > Left Chest Pocket

1908WZ WOMENS ³/₄ SLEEVE

- > Career Slim Fit
- > Placket Front
- > Front & Back Darts
- > Hidden Modesty Button
- > Classic Collar
- > Adjustable Cuff

FABRIC

60% Cotton, 40% Polyester, Easy Iron and Silk Protein



EASY IRON



COTTON RICH



SILK PROTEIN
FINISH



CAREER
SLIM FIT

SIZES

WOMENS: 6 - 26 MENS: S - 6XL

(Refer to Fit Guide P 90)

WHITE



LANDSDOWNE

MICRO STEP LONG SLEEVE SHIRTS

1709L MENS LONG SLEEVE

- > Career Contemporary Fit
- > Placket Front
- > Spread Collar
- > Convertible Cuff

1709WL WOMENS ¾ SLEEVE

- > Career Contemporary Fit
- > Front Darts,
- > Placket Front with White Contrast Inside
- > Classic Collar
- > Action Back Pleats
- > Hidden Modesty Button
- > Split Cuff Detail

FABRIC

60% Cotton, 40% Polyester, Easy Iron



EASY IRON



COTTON RICH



CAREER
CONTEMPORARY
FIT

SIZES

WOMENS: 6 - 26 MENS: 37 - 50

(Refer to Fit Guide P 90)

SKY



GREY





NOSTOHOIN



1272L



1520WL



1520L

☆ YOU MAY ALSO CONSIDER STYLES ULTIMATE & GUILDFORD

NICHOLSON

PREMIUM POPLIN LONG SLEEVE SHIRTS

1272L MENS LONG SLEEVE

- > Career Contemporary Fit
- > Placket Front
- > Classic Collar
- > Convertible Cuff
- > Left Chest Pocket

1520WL WOMENS LONG SLEEVE

- > Career Slim Fit
- > Placket Front
- > Front & Back Darts
- > Hidden Modesty Button
- > Classic Collar
- > Adjustable Cuff

1520L MENS LONG SLEEVE

- > Career Slim Fit
- > Placket Front
- > Classic Collar
- > Convertible Cuff

FABRIC

65% Polyester, 35% Cotton Silk Protein Finish, Easy Iron



EASY IRON



POLYESTER/
COTTON



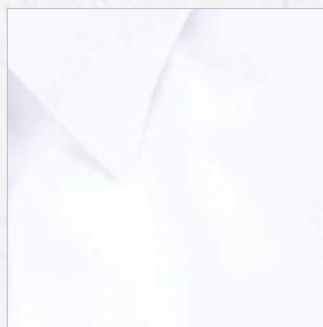
SILK PROTEIN
FINISH

SIZES

1520WL: 6 - 26 **1520L:** 37 - 46

1272L: 37 - 60 (Charcoal, Star White, Black) 37 - 54 (French Blue, Navy)
(Refer to Fit Guide P 90)

STAR WHITE



BLACK



FRENCH BLUE



NAVY



CHARCOAL



NICHOLSON

PREMIUM POPLIN SHORT SLEEVE SHIRTS

1520WZ WOMENS ¾ SLEEVE

- > Career Slim Fit
- > Placket Front
- > Front & Back Darts
- > Hidden Modesty Button
- > Classic Collar
- > Adjustable Cuff

1272S MENS SHORT SLEEVE

- > Career Contemporary Fit
- > Placket Front
- > Classic Collar
- > Left Chest Pocket

1520WS WOMENS SHORT SLEEVE

- > Career Slim Fit
- > Placket Front
- > Front & Back Darts
- > Hidden Modesty Button
- > Classic Collar
- > Adjustable Cuff

FABRIC

65% Polyester, 35% Cotton Silk Protein Finish, Easy Iron



EASY IRON



POLYESTER/
COTTON



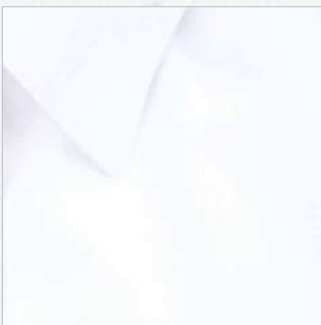
SILK PROTEIN
FINISH

SIZES

WOMENS: 6 - 26 MENS: 37 - 54

(Refer to Fit Guide P 90)

STAR WHITE



BLACK



FRENCH BLUE



NAVY



CHARCOAL





1520WZ

1272S

1520WS

☆ YOU MAY ALSO CONSIDER STYLES ULTIMATE & GUILDFORD



OXFORD



☆ YOU MAY ALSO CONSIDER STYLES WESTWOOD & LANSDOWNE

BLUE

OXFORD

OXFORD WEAVE LONG SLEEVE SHIRTS

1025WL WOMENS

¾ SLEEVE

- > Career Classic Fit
- > Placket Front
- > Front Darts
- > Classic Collar
- > Split Cuff Detail

1015L MENS LONG

SLEEVE

- > Career Classic Fit
- > Placket Front
- > Button Down Collar
- > Convertible Cuff
- > Left Chest Pocket

FABRIC

70% Cotton, 30% Polyester, Easy Iron Finish



EASY IRON



COTTON RICH



CLASSIC FIT

SIZES

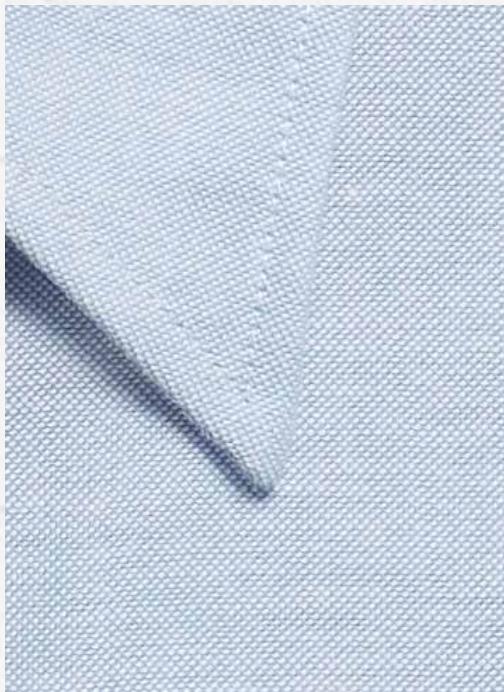
WOMENS: 8 - 22 (Blue) 8 - 26 (White)

MENS: 37 - 56

(Refer to Fit Guide P 90)

BLUE

WHITE



GUILDFORD

SQUARE TEXTURED LONG SLEEVE SHIRTS

1251WL WOMENS ¾ SLEEVE

- > Career Contemporary Fit
- > Double Fold Front
- > Classic Collar
- > Split Cuff Detail

1251L MENS LONG SLEEVE

- > Career Contemporary Fit
- > Placket Front
- > Spread Collar
- > Convertible Cuff
- > Left Chest Pocket

FABRIC

55% Cotton, 45% Polyester, Easy Iron



EASY IRON



COTTON RICH



CAREER
CONTEMPORARY
FIT

SIZES

WOMENS: 6 - 26 MENS: 37 - 54

(Refer to Fit Guide P 90)

WHITE



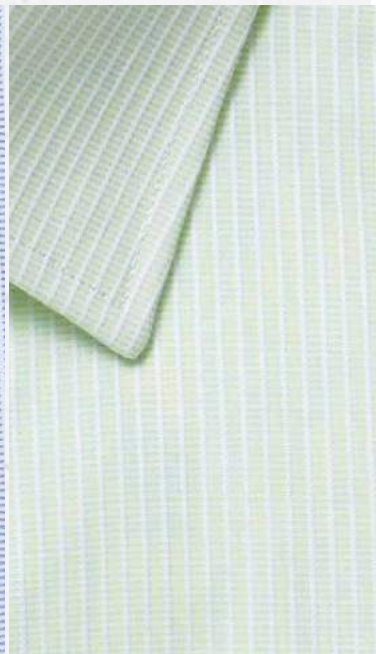
SILVER



BLUE



MINT





BLUE

☆ YOU MAY ALSO CONSIDER STYLES WESTGARTH & NICHOLSON





☆ YOU MAY ALSO CONSIDER STYLES LANDSDOWN & OXFORD

WESTWOOD

HERRINGBONE STRIPE LONG SLEEVE SHIRTS

1069L MENS LONG SLEEVE

- > Career Contemporary Fit
- > Placket Front
- > Spread Collar
- > Convertible Cuff
- > Left Chest Pocket

1069WL WOMENS ³/₄ SLEEVE

- > Career Contemporary Fit
- > Placket Front
- > Back Darts
- > Classic Collar
- > Split Cuff Detail

FABRIC

55% Cotton, 45% Polyester, Easy Iron



EASY IRON



COTTON RICH



CAREER
CONTEMPORARY
FIT

SIZES

WOMENS: 8 - 22 **MENS: 37 - 50**

(Refer to Fit Guide P 90)

SKY

WHITE



BOURKE

OXFORD CHECK LONG SLEEVE SHIRT

1712L

- > Mens Long Sleeve Oxford Window Pane Check Shirt
- > Career Contemporary Fit
- > Placket Front
- > Spread Collar
- > Convertible Cuff



FABRIC

60% Cotton, 40% Polyester, Easy Iron and Silk Protein



EASY IRON



COTTON RICH



SILK PROTEIN
FINISH



CAREER
CONTEMPORARY
FIT

SIZES

37 - 50

(Refer to Fit Guide P 90)

BLUE



LILAC



RED





WINDSOR



☆ YOU MAY ALSO CONSIDER STYLES NICHOLSON & SMITH

SKY



WINDSOR

PUPPY TOOTH LONG SLEEVE SHIRTS

1267L MENS LONG SLEEVE

- > Career Contemporary Fit
- > Placket Front
- > Classic Collar
- > Convertible Cuff
- > Left Chest Pocket

1267WL WOMENS LONG SLEEVE

- > Career Contemporary Fit
- > Placket Front
- > Front & Back Darts
- > Classic Collar
- > Mitred Cuff

FABRIC

65% Polyester, 35% Cotton, Easy Iron



EASY IRON



POLYESTER
COTTON



CAREER
CONTEMPORARY
FIT

SIZES

WOMENS: 6 - 26 (Sky) 6 - 26 (Black)

MENS: 37 - 54

(Refer to Fit Guide P 90)

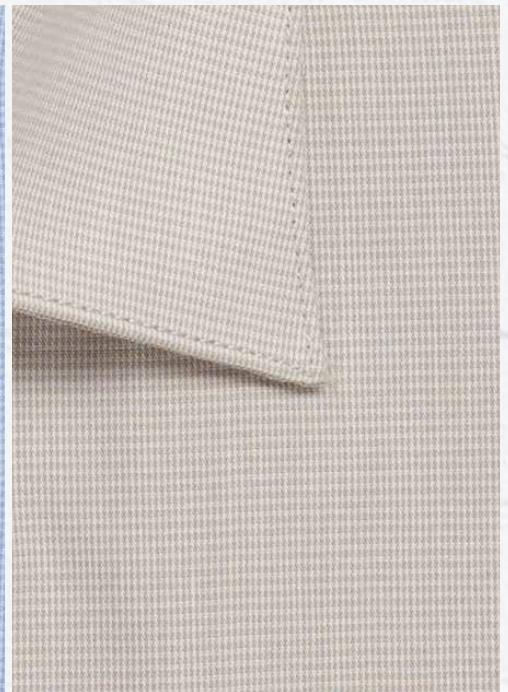
BLACK



SKY



TAUPE (1267L ONLY)



WINDSOR

PUPPY TOOTH SHORT SLEEVE SHIRTS

1267S MENS SHORT SLEEVE

- > Career Contemporary Fit
- > Placket Front
- > Classic Collar
- > Left Chest Pocket

1267WS WOMENS SHORT SLEEVE

- > Career Contemporary Fit
- > Placket Front
- > Front & Back Darts
- > Classic Collar

FABRIC

65% Polyester, 35% Cotton, Easy Iron



EASY IRON



POLYESTER
COTTON



CAREER
CONTEMPORARY
FIT

SIZES

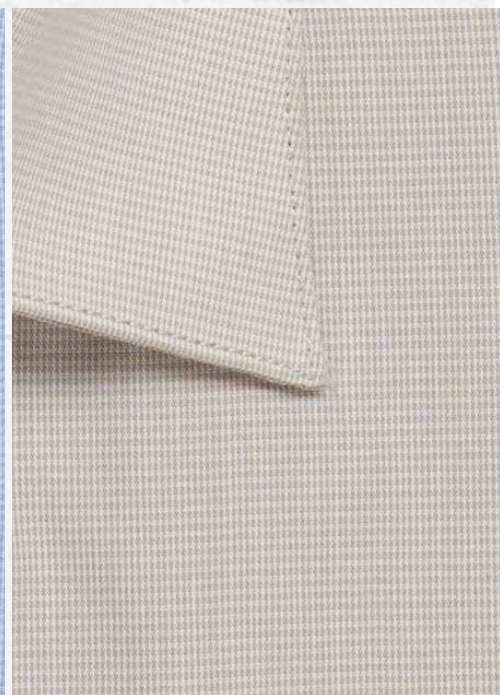
WOMENS: 6 - 26 MENS: 37 - 50

(Refer to Fit Guide P 90)

BLACK

SKY

TAUPE (1267S ONLY)





WINDSOR

BLUE

☆ YOU MAY ALSO CONSIDER STYLES NICHOLSON & SMITH





☆ YOU MAY ALSO CONSIDER STYLES WELLINGTON & SMITH

HARDWARE

CHAMBRAY DOBBY LONG SLEEVE CASUAL SLIM FIT SHIRTS

1713HL MENS LONG SLEEVE

- > Casual Slim Fit
- > Placket Front
- > Back Darts
- > Concealed Button
Down Collar
- > Left Chest Pocket
- > Roll Up Sleeve Tabs
- > Adjustable Cuff

1713WHL WOMENS LONG SLEEVE

- > Casual Slim Fit
- > Double Fold Front
- > Classic Collar
- > Left Chest Collar
- > Front & Back Darts
- > Roll Up Sleeve Tabs

FABRIC

100% Cotton with Soft Garment Wash



100% COTTON



CASUAL
SLIM FIT

SIZES

WOMENS: 6 - 20 MENS: S - 3XL

(Refer to Fit Guide P 90)

SLATE



WELLINGTON

DENIM DOBBY LONG SLEEVE CAREER SLIM FIT SHIRTS

1714HL MENS LONG SLEEVE

- > Career Slim Fit
- > Placket Front
- > Concealed Button Down Collar
- > Left Chest Pocket
- > Roll Up Sleeve Tabs
- > Adjustable Cuff

1714WHL WOMENS LONG SLEEVE

- > Career Slim Fit
- > Double Fold Front
- > Classic Collar
- > Left Chest Collar
- > Front & Back Darts
- > Roll Up Sleeve Tabs

FABRIC

100% Cotton with Soft Garment Wash



100% COTTON



CAREER
SLIM FIT

SIZES

WOMENS: 6 - 20 MENS: S - 3XL

(Refer to Fit Guide P 90)

NAVY





ICON



5045LN



5045SN

1,100,000
SHIRTS
SOLD

☆ YOU MAY ALSO CONSIDER STYLES WELLINGTON & HARDWARE



ICON

THE ICONIC GLOWEAVE 5045 WORK SHIRT

5045LN MENS LONG SLEEVE

- > Classic #5045 Fit
- > Placket Front
- > Button Down Collar
- > Double Pockets
- > Tortoise Shell Buttons
- > Trademark Suede Pen Pocket Detail
- > Adjustable Cuff

5045SN MENS SHORT SLEEVE

- > Classic #5045 Fit
- > Placket Front
- > Button Down Collar
- > Double Pockets
- > Tortoise Shell Buttons
- > Trademark Suede Pen Pocket Detail

FABRIC

100% Cotton, Soft Garment Wash



100% COTTON



5045 FIT

SIZES

S - 6XL

(Refer to Fit Guide P 90)

BLACK



BLUE



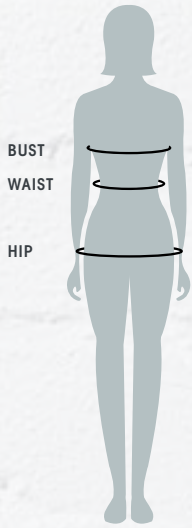
GREEN



SAND



FIT CHART



1 WOMENS SHIRTS & TOPS

Size	6	8	10	12	14	16	18	20	22	24	26	28	30
Top Sizes	XS	S		M		L		XL	2XL	3XL	4XL		
Bust Measurement (cms)	80	85	90	95	100	105	110	115	120	125	130	135	140
Waist Measurement (cms)	62	67	72	77	82	87	92	97	102	107	112	117	122

2 WOMENS PANTS, SKIRTS & JACKETS

Size	4	6	8	10	12	14	16	18	20	22	24	26
Jackets - Bust Measurement (cms)	80	85	90	95	100	105	110	115	120	125	130	127
Pants / Skirts - Waist Measurement (cms)	57	62	67	72	77	82	87	92	97	102	107	112

This is a guide only and true to BODY measurements. Glowave recommends that correct sizing is confirmed with a fit sample prior to bulk purchases.

CAREER CLASSIC FIT

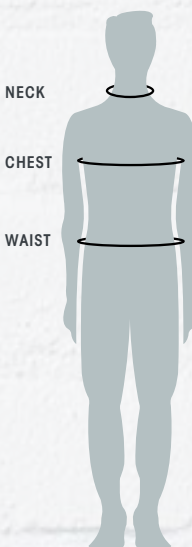
Generous Through The Shoulders And Waist For Utmost Comfort.

CAREER CONTEMPORARY FIT

Our Most Popular Fit That Flatters Most Body Shapes, Gently Tapered Through The Waist

CAREER SLIM FIT & CASUAL SLIM FIT

Slimmer Across The Chest, Sleeves And Waist For A More Fitted Silhouette



3 MENS SHIRTS

Neck size CM	37	38	39	40	41	42	43	44	46	47	49	50	52	54	56	58
Casual Sizes	S		M		L		XL		2XL	3XL	4XL	5XL				
Chest Measurement (cms)	94	98	102	106	110	114	118	122	130	136	144	148	154	160	166	172
Waist Measurement (cms)	90	94	98	102	106	110	114	118	126	131	139	143	149	155	161	167

4 MENS PANTS & JACKETS

Jackets (cms)	92		97		102		107		112	117	122	127	
Jackets (ins)	36		38		40		42		44	46	48	50	
Trouser Waist (cms)	72	77	82	87	92	97	102	107	112	117	122	127	132
Chino Waist (ins)	28	30	32	34	36	38	40	42	44	46	48	50	52

This is a guide only and true to BODY measurements. Glowave recommends that correct sizing is confirmed with a fit sample prior to bulk purchases.

CAREER CLASSIC FIT & 5045 FIT

Generous Through The Shoulders And Waist For Utmost Comfort.

CAREER CONTEMPORARY FIT

Our Most Popular Fit That Flatters Most Body Shapes, Gently Tapered Through The Waist

CAREER SLIM FIT & CASUAL SLIM FIT

Slimmer Across The Chest, Sleeves And Waist For A More Fitted Silhouette

ICON KEY



MACHINE WASHABLE

Can be warm or cool washed in a domestic washing machine with regular washing powder or liquid without bleach.



EASY CARE

Fabric has been treated with an Easy Care finish allowing it to stay fresh looking all day.



COTTON RICH

The fabric is cotton and polyester blend. The predominant yarn content is cotton.



POLYESTER COTTON

The fabric is a polyester and cotton blend. The predominant yarn content is polyester.



EASY IRON

The garment will be easy to iron requiring only a light press to deliver a perfect finish.



SILK PROTEIN

Fabric has been finished to have a softer hand feel and to have Easy Care properties as above.

CAREER

BY GLOWEAVE



www.GLOWEAVECAREER.COM