



bizcare

ISSUE 1 . 2019

Welcome to the Biz Care healthcare experience.

We understand that when you look good you feel good.

That's why we're excited to introduce our first collection of innovative, comfortable and extremely functional apparel for modern medical professionals. Because fit is everything.

Biz Care garments have been designed to easily coordinate with the Biz Collection range so we've handpicked popular styles and colours that work perfectly together. Look out for the handy Range Guide (p50) that illustrates styles from both brands.

WHY BIZ CARE?

At Biz Care, we like to think of ourselves as masters of the tiniest details. All of our health wear designs are rigorously tested in dedicated laboratories and trialled on real nurses to make sure we get the functionality just right.

Designed with local markets in mind, we combine on-trend design, comfort and performance to create apparel that suits everyone and everybody.

Say goodbye to boring, boxy and scratchy uniforms and 'HELLO' to Biz Care!



bizcare

THANK YOU ♥ FOR CARING



OUR JOURNEY TO A SUSTAINABLE FUTURE

We're committed to designing and manufacturing ethical and sustainable health care attire. At the core of our business is a long-standing commitment to ethical trading. We believe that businesses can be both profitable and responsible.

We're also committed to operating in a way that's mindful of our planet's limited resources. That's why every Biz Care branded product is packaged in degradable packaging. Helping to reduce the amount of single-use plastic manufactured.

In fact, our suppliers must also comply with a strict code of ethics. This includes stringent details and a commitment to labour rights, environmental regulations, ethical working conditions and standards.

We're making it a priority to change our product life cycle for the better. That means a better future for our customers and the planet.

Harish Kumar
Director

CONTENTS

04.

Team dressing
Color blocking

Navy
Teal
Electric Blue
Charcoal
Cherry
Grape

16.

Shirts
and T-Tops

24.

Lowens

30.

Scrubs

39.

Polos

40.

Health
and Beauty

42.

Knitwear
and Outerwear

48.

Size Guide

50.

Range Guide

CLASSIC NAVY

Navy is a staple colour in any health wardrobe. Best worn with black or navy lowers. Match with other bright colours to create your own contrasting wardrobe options.

FEATURED - LEFT TO RIGHT 1. S770MS Ink Monaco S/S shirt, CL959ML Navy Comfort Waist Cargo Pant
2. CS951LT Navy Easy Stretch 3/4 Sleeve Shirt, CL954LL Navy Comfort Waist Cargo Pant 3. CS947LS Navy Easy Stretch S/S Shirt, CL953LL Navy Comfort Waist Slim Leg Pant
4. CS949LS Navy Easy Stretch Tunic, CL956LS Navy Comfort Waist Cargo Skirt 5. CS949LS Navy Easy Stretch Tunic, CL955LL Navy Comfort Waist Straight Leg Pant





TEAL TIME

Add vibrancy and modern flair to your wardrobe with Teal. Teal matches well with navy, black or charcoal in both lowers and outerwear. Mix and match with our Biz Care Easy Stretch Daisy Print to brighten up your outfit.

FEATURED - LEFT TO RIGHT 1. SH3603 Teal Oasis S/S Shirt, CL958ML Charcoal Comfort Waist Flat Front Pant
2. CK962LC Charcoal Zip Front S/S Knit, CS948LS Teal Daisy Print Easy Stretch S/S Shirt, CL954LL Charcoal Comfort Waist Cargo Pant
3. CS950LS Teal Daisy Print Easy Stretch Tunic, CL953LL Charcoal Comfort Waist Slim Leg Pant 4. P400LS Teal Crew Polo, CL956LS Charcoal Comfort Waist Cargo Skirt

ELECTRIC BLUE

Give your wardrobe a recharge with electric blue. Pair with navy, charcoal and black suiting and outerwear for a striking look. And give depth to your range with our tailored monochrome shirts and polos.

FEATURED - LEFT TO RIGHT 1. CS952LS Electric Blue Jersey S/S T-top, CL956LS Charcoal Comfort Waist Cargo Skirt
2. CS949LS Electric Blue Easy Stretch Tunic, CL953LL Charcoal Comfort Waist Slim Leg Pant 3. CK961LV Charcoal Button Front Knit Vest, CS947LS Electric Blue Easy Stretch S/S Shirt,
CL953LL Charcoal Comfort Waist Slim Leg Pant 4. CST945MS Electric Blue V-Neck Scrub Top, CSP946ML Electric Blue Multi-Pocket Scrub Pant
5. CST942LS Electric Blue Round Neck Tailored Fit Scrub Top, CSP944LL Electric Blue Multi-Pocket Straight Leg Scrub Pant





EARTHY CHARCOAL

A colour that will go with everything in your wardrobe and compliment any skin tone. Drawing its tonal inspiration from the minerals of the earth, add depth to charcoal with contrasting colours of blue, purple or white.

FEATURED - LEFT TO RIGHT 1. CS947LS Charcoal Easy Stretch S/S Shirt, CL956LS Black Comfort Waist Cargo Skirt
2. CS952LS Charcoal Jersey S/S T-Top, CL953LL Black Comfort Waist Slim Leg Pant 3. P400LS Charcoal Crew Polo, CL953LL Black Comfort Waist Slim Leg Pant

BLOSSOM WITH CHERRY

Add extra-refreshing energy and life to your wardrobe with pops of colour. Match with black or navy lowers and outerwear. For depth, add a secondary colour palette of white, blue and black that's sure to turn heads.

FEATURED - LEFT TO RIGHT 1. P400LS Red Crew Polo, CL957LS Black Comfort Waist Cargo Short 2. P400MS Red Crew Polo, CL960MS Black Comfort Waist Cargo Short
3. CS949LS Cherry Easy Stretch Tunic, CL954LL Black Comfort Waist Cargo Pant 4. CS951LT Cherry Easy Stretch 3/4 Sleeve Shirt, CL953LL Black Comfort Waist Slim Leg Pant
5. CS947LS Cherry Easy Stretch S/S Shirt, CL955LL Black Comfort Waist Straight Leg Pant





GRAPE

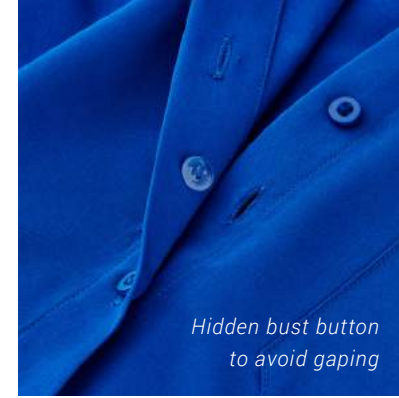
Modern and eye catching, this purple grape adds richness and depth to your wardrobe. We've combined the calm stability of blue with the fierce energy of red. Try pairing with navy, charcoal, black or white.

FEATURED - LEFT TO RIGHT 1. S265LS Grape Oasis S/S Overblouse, CL955LL Black Comfort Waist Straight Leg Pant
2. CST941LS Black V-neck Easy Fit Scrub Top, CID940U Grape Scrub Identifier, CSP943LL Black Multi-Pocket Slim Leg Scrub Pant
3. SH3603 Grape Oasis S/S Shirt, CL960MS Black Comfort Waist Cargo Short

EFFORTLESSLY EASY STRETCH TOPS

We've redefined healthcare dressing
with these easy care, non-iron shirts
in a soft fabric.





A perfect blend of style, comfort and function. The easy-care fabric is breathable, soft and lightweight; perfect for all climates. Styles feature longer hem lengths, hidden bust button (short sleeve and ¾ sleeve styles), side splits and pockets.

FABRIC COMPOSITION
CARE INSTRUCTIONS

94% Polyester 6% Elastane
Gentle machine wash. Wash inside out with similar colours.
Do not bleach, soak or tumble dry. Line dry in shade.



CS947LS
Womens
S/S Shirt
4 - 30



CS949LS
Womens
Tunic
4 - 30



CS951LT
Womens
3/4 Shirt
4 - 30



EASY STRETCH DAISY PRINT TOPS

Who says healthcare prints have to be boring thanks to these easy care, non-iron tops in a breathable, soft fabric.

Match with the Easy Stretch range (p16) and Jersey T-Tops (p20) for a vibrant contrast to your working wardrobe.



Cuff detailing



Large durable pockets



NAVY



ELECTRIC
BLUE



TEAL

A perfect blend of style, comfort and function. The easy-care fabric is breathable, soft and lightweight; perfect for all climates. Styles feature longer hem lengths, hidden bust button on short sleeve style, side splits and pockets.

FABRIC COMPOSITION
CARE INSTRUCTIONS

94% Polyester 6% Elastane
Gentle machine wash. Wash inside out with similar colours.
Do not bleach, soak or tumble dry. Line dry in shade.



CS948LS
Womens
Daisy Print
S/S Shirt
4 - 30



CS950LS
Womens
Daisy Print
Tunic
4 - 30

SOFT JERSEY T-TOPS

Stretchy and lightweight, it's your new wardrobe essential, made from an easy care, durable stretch knit. Designed to compliment all silhouettes.





- NAVY
- ELECTRIC BLUE
- TEAL
- CHERRY
- CHARCOAL

Our easy care Jersey T-Top is an essential piece in any working wardrobe. The lightweight soft knit provides stretch and comfort without clinging to the body. Mix and match with other Biz Care tops.

FABRIC COMPOSITION
CARE INSTRUCTIONS

95% Polyester 5% Elastane
Warm gentle machine wash. Wash with similar colours. Do not bleach, soak or tumble dry. Line dry in shade. Little to no pressing required.



CS952LS
Womens
S/S T-Top
XXS - 4XL



OASIS SHIRTS



Oasis is ideal for demanding work environments. It's soft, durable and requires little to no ironing. Made from yarn wicked breathable polyester, providing the same cool and dry features of linen.

FABRIC COMPOSITION

BIZ COMFORTCOOL™ Performance Fabric
100% Yarn Wicked Breathable Polyester

CARE INSTRUCTIONS

Cold gentle machine wash.
Do not bleach, soak or tumble dry.
Line dry in shade.



LB3601
Womens
S/S Shirt
6 - 26



S265LS*
Womens
Overblouse
6 - 30



LB3600
Womens
3/4 Shirt
6 - 26



SH3603
Mens
S/S Shirt
S - 3XL, 5XL



MONACO SHIRTS

INK

ELECTRIC
BLUE

TEAL

CHERRY

PLATINUM

Get that pristine look with this stretch cotton-rich fabric alternative. The Monaco is a functional and comfortable shirt range for demanding healthcare environments.

FABRIC COMPOSITION

68% Cotton 28% Polyester
4% Elastane

CARE INSTRUCTIONS

Cold gentle machine wash.
Do not bleach, soak or tumble
dry. Line dry in shade.



S770LS
Womens
S/S Shirt
6 - 26



S770LT
Womens
3/4 Shirt
6 - 26



S770MS
Mens
S/S Shirt
XS - 5XL



CARE
CARGOS





Designed and developed for healthcare professionals by specialists with over 30 years of industry experience.

Biz Care Cargos are designed, developed, fitted and tested in Australia and New Zealand by real nurses to ensure our range is fit for purpose, comfortable and stylish.

Biz Care Cargos feature:

- Multiple functional and durable pockets.
- Pockets made from self-fabric to withstand sharp tools. Bar tacked to prevent pocket corners ripping.
- Streamlined pockets provide a clean and tailored appearance, and less like industrial workwear pockets.
- Roll up pant leg option provide the flexibility of a 3/4 leg length.
- Durable, hard-wearing soft fabric with added stretch for comfort and movement.
- Comfort stretch waist bands that move with you.



CL953LL Womens Comfort Waist Slim Leg Pant



CL955LL Womens Comfort Waist Straight Leg Pant



CL954LL Womens Comfort Waist Cargo Pant

COMFORT WAIST LOWERS – WOMENS



CL956LS Womens Comfort Waist Cargo Skirt

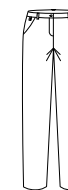


CL957LS Womens Comfort Waist Cargo Short

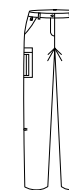
- NAVY
- CHARCOAL
- BLACK



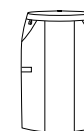
CL953LL
Womens
Slim Leg
Pant
4 - 20



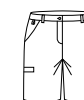
CL955LL
Womens
Straight Leg
Pant
8 - 30



CL954LL
Womens
Cargo Pant
4 - 30



CL956LS
Womens
Cargo Skirt
4 - 30



CL957LS
Womens
Cargo Short
4 - 20

You'll be impressed with the hard wearing, durable, and easy-care fabric. Made from a lightweight twill fabric, it's breathable and comfortable making it perfect for all climates and health care roles.

FABRIC COMPOSITION
CARE INSTRUCTIONS

64% Polyester 34% Viscose 2% Elastane
Warm gentle machine wash 40°. Wash inside out with similar colours.
Do not bleach, soak or tumble dry. Line dry in shade. Cool iron if required.



CL958ML Mens Comfort Waist Flat Front Pant



CL959ML Mens Comfort Waist Cargo Pant



NAVY

CHARCOAL

BLACK

COMFORT WAIST LOWERS – MENS

The perfect hard wearing, durable, and easy-care fabric. Made from a lightweight twill fabric, it's breathable and comfortable making it perfect for all climates and health care roles.

FABRIC COMPOSITION CARE INSTRUCTIONS

64% Polyester 34% Viscose 2% Elastane
Warm gentle machine wash 40°. Wash inside out with similar colours. Do not bleach, soak or tumble dry. Line dry in shade. Cool iron if required.



CL958ML
Mens Flat
Front Pant
72R - 127R



CL959ML
Mens
Cargo Pant
72R - 127R



CL960MS
Mens
Cargo Short
72R - 127R



BIZ CARE SCRUBS

When you look good you feel good. That's why the Biz Care health wear range has been expertly tailored for your best ever fit, no matter your body type.

Biz Care have created more than just another range of scrubs. Designed in Australia together with medical professionals, we're transforming the healthcare experience by creating innovative, comfortable and fit for purpose medical scrubs.

All our scrubs are crafted with attention to detail; functional, responsive, easy care and comfort.

Our collection incorporates styles and colours in multiple fabrics and fits, in an extensive range of sizes. Allowing you to look good and feel good throughout the working week.



IDENTIFIERS

Optional tabs attach with press studs for easy identification of streams. Available in 8 colors.



CLEVER POCKETS

Pockets positioned to securely hold all your tools with bungee loop for keys.



UTILITY LOOPS

Hidden utility loops in both the scrub top and pant to hold your tools in place.



OPPOSITE PAGE - LEFT TO RIGHT

1. CST945MS Mens V-neck Scrub Top, CSP946ML Mens Multi-Pocket Scrub Pant
2. CST942LS Womens Round Neck Tailored Fit Scrub Top, CSP943LL Womens Multi-Pocket Slim Leg Scrub Pant



FEATURED - LEFT TO RIGHT

1. CST941LS V-Neck Easy Fit Scrub Top
CSP944LL Multi-Pocket Straight Leg Scrub Pant
2. Same as above
3. CST941LS V-Neck Easy Fit Scrub Top
CSP943LL Multi-Pocket Slim Leg Scrub Pant

Focusing on functionality,
Biz Care ladies scrubs
come in tailored fits and
styles to suit all body types
and job roles.

Once you try them on, you'll
never want to take them off!





Easy-care, wash and wear performance fabric for the most demanding of environments.

FABRIC COMPOSITION

96% Polyester 4% Elastane, with wicking finish

CARE INSTRUCTIONS

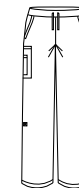
Warm gentle machine wash 40°C. Do not bleach, soak or tumble dry. Line dry in shade.



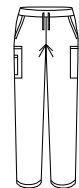
CST941LS
Womens V-Neck
Scrub Top
S - 5XL



CST942LS
Womens Round
Neck Scrub Top
XXS - 3XL



CSP944LL
Womens Straight
Leg Scrub Pant
S - 5XL



CSP943LL
Womens Slim Leg
Scrub Pant
XXS - 3XL



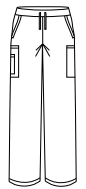


FEATURED

CST945MS Mens
V-Neck Scrub Top
CSP946ML Mens
Multi-Pocket Scrub Pant



CST945MS
Mens V-Neck
Scrub Top
XS - 5XL



CSP946ML
Mens
Scrub Pant
XS - 5XL

Easy-care, wash and wear performance fabric for the most demanding of environments.

FABRIC COMPOSITION

96% Polyester 4% Elastane, with wicking finish

CARE INSTRUCTIONS

Warm gentle machine wash 40°C. Do not bleach, soak or tumble dry. Line dry in shade.

BIZ CARE SCRUB IDENTIFIERS

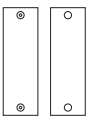
Identifiers are used in conjunction with the Biz Care scrub tops, and are the perfect way to differentiate streams and job roles without having the team in different coloured scrubs.

Identifiers easily snap onto the hidden press studs on the scrub sleeve. A small monogram is also possible on the identifier.





FABRIC COMPOSITION
96% Polyester 4% Elastane
with metal press studs



CID940U
Scrub Identifier
One Size



NAVY

ROYAL

POLY COTTON SCRUBS

High performance, soft touch fabric with mechanical stretch. Perfect for group laundering up to 80°C.

FABRIC COMPOSITION

65% Polyester 35% Cotton

FEATURED - LEFT TO RIGHT

1. H10622 Womens Scrub Top
H10620 Womens Bootleg Scrub Pant
2. H10612 Unisex Scrub Top
H10610 Unisex Scrub Pant



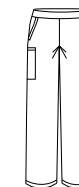
H10622
Womens
Scrub Top
XS - 3XL



H10612
Unisex
Scrub Top
XS - 3XL, 5XL



H10620
Womens Bootleg
Scrub Pant
XXS - 3XL



H10610
Unisex
Scrub Pant
XS - 3XL, 5XL

Styles not suitable for use with Biz Care scrub identifier. See the full range of styles and colours available in the Biz Collection catalogue.



CREW POLOS

- NAVY
- ROYAL
- TEAL
- RED
- CHARCOAL
- BLACK
- PURPLE

Easy-care, durable polo perfect for all health care professions. Knitted flat collar for tailored appearance. Y-placket design for ladies style.

Men's style includes a loose pocket.

FABRIC COMPOSITION

65% Polyester 35% Cotton Pique



P400LS
Womens
S/S Polo
8 - 24



P400MS
Mens
S/S Polo
S - 3XL, 5XL



WHITE

HEALTH & BEAUTY

Easy-care performance fabric, made from durable cotton twill with Mechanical stretch to provide extra comfort.

FABRIC COMPOSITION

65% Polyester 35% Cotton Twill



H132ML
Unisex
Lab Coat
XS - 3XL, 5XL

See the full range of styles and colours available in the Biz Collection catalogue.



WHITE

BLACK

BLACK/
WHITE



H134LS
Womens
Zen Tunic
6 - 20

Teflon® stain release stretch fabric allows for easy care. Semi fitted style with side splits and long hemline for functionality.

FABRIC COMPOSITION

97% Polyester 3% Elastane



WHITE

BLACK



H133LS
Womens
Eden Tunic
6 - 20

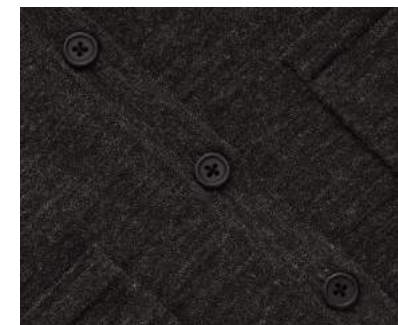
Semi-fitted style with Teflon® for easy care. Two lower front pockets, longer hem line, side splits and center back action-back pleat adds functionality.

FABRIC COMPOSITION

97% Polyester 3% Elastane



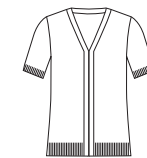
KNITWEAR / OUTERWEAR



Designed for functional roles, Biz Care knits provide warmth, durability and a soft hand feel. With longer hem lengths to provide extra coverage.

FABRIC COMPOSITION
CARE INSTRUCTIONS

60% Acrylic 40% Merino Wool
Warm gentle machine wash with wool approved detergent. Wash garment inside out with like colours. Do not bleach, soak, wring or tumble dry. Reshape and dry flat in shade. Cool iron using press cloth.



CK962LC
Womens Zip
Front S/S Knit
XXS - 4XL



CK961LV
Womens Button
Front Knit Vest
XXS - 4XL



NAVY

CHARCOAL

BLACK

Made from a Viscose/Nylon blend, making it perfect for those after a non-wool alternative. 2 Way zip allows for multiple styling options.

FABRIC COMPOSITION
73% Viscose 27% Nylon

CARE INSTRUCTIONS
Machine washable.



LC3505
Womens 2 Way
Zip Cardigan
S - 4XL

See the full range of styles and colours available in the Biz Collection catalogue.



NAVY

CHARCOAL

BLACK



NAVY

CHARCOAL

BLACK

Easy care, 12-gauge wool blend knits are perfect for keeping you warm in the cooler climates or working in an air-conditioned environment.

FABRIC COMPOSITION

50% Pre-Shrunk Wool 50% Acrylic

CARE INSTRUCTIONS

Machine washable.



LV619L
Womens
Milano Vest
XS - 3XL

Easy care, 12-gauge wool blend knits are perfect for keeping you warm in the cooler climates or working in an air-conditioned environment.

FABRIC COMPOSITION

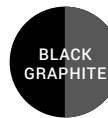
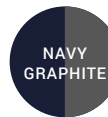
50% Pre-Shrunk Wool 50% Acrylic

CARE INSTRUCTIONS

Machine washable.



WV619M
Mens
Milano Vest
XS - 3XL, 5XL



GENEVA



J307L
Womens
Geneva Jacket
S - 2XL



J404L
Womens
Geneva Vest
S - 2XL



J307M
Mens
Geneva Jacket
S - 3XL, 5XL

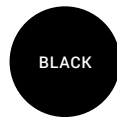


J404M
Mens
Geneva Vest
S - 3XL, 5XL

Micro- Ribbed fleece lining. Wind proof, water repellent and breathable shell, makes this the perfect outdoor lightweight jacket. Features adjustable cuff fasteners, scalloped longer back tail, and side zipped pockets.

FABRIC COMPOSITION

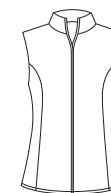
BIZTECH™ Softshell
100% Bonded Membrane Polyester



MICRO FLEECE



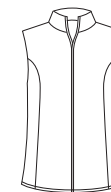
PF631
Womens
Fleece Jacket
8 - 24



PF905
Womens
Fleece Vest
8 - 24



PF630
Mens
Fleece Jacket
XS - 3XL, 5XL



F233MN
Mens
Fleece Vest
XS - 3XL, 5XL

The essential micro-fleece jacket and vest range is low-pilling with 2 side zip pockets.

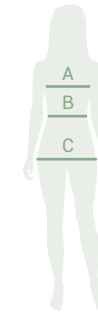
FABRIC COMPOSITION

100% Polyester Low Pill Micro Fleece

WOMENS SIZE GUIDE

For your body measurements, please keep the tape measure taut - but not stretched - and follow the guidelines. Get a friend to help if necessary and ensure all measurements are taken from the same side of your body, taking the garment style into consideration as different styles have different fits.

For more information on style fits and how to measure, visit www.biz-care.com.



A. BUST - Measure under your arms and across shoulder blades, around the fullest part of your bust. Hold one finger between body and tape.

B. WAIST - Measure around your natural waistline while holding one finger between body and tape. This is the smallest part of your waist.

C. HIP - Measure around fullest part of your hips while standing naturally.

Women's Shirts and Tops

Bust (cm)	Fit Type	76.5	79	84	89	94	99	104	111	116	121	126	131	136	141
Shirts and Tunics	Easy Fit	4	6	8	10	12	14	16	18	20	22	24	26	28	30
T-Tops	Easy Fit	XXS	XS	S		M	L		XL	2XL		3XL	4XL		
Polos	Semi-Fitted			8	10	12	14	16	18	20	22	24			
Health and Beauty Tunics	Fitted			6	8	10	12	14	16	18	20				

Women's Knitwear and Outerwear

Bust (cm)	76.5	79	84	89	94	99	104	111	116	121	126	131	136
Knitwear	XXS	XS	S		M	L		XL	2XL		3XL	4XL	
Micro Fleece			8	10	12	14	16	18	20	22	24		
Jackets and Vests			S		M	L		XL	2XL				

Women's Scrub Tops

Bust (cm)	76.5	79	84	89	94	99	104	111	116	121	126	131	136	
Biz Care Scrub Top	XXS	XS	S		M	L		XL	2XL		3XL	4XL	5XL	
Biz Collection Scrub Top			XS	XS - S	S	M	L	XL		2XL		3XL		

Women's Pants, Skirts, Shorts, Scrub Pants

Waist (cm)	59.5	62	67	72	77	82	87	94	99	104	109	114	119	124
Hip (cm)	86.5	89	94	99	104	109	114	121	126	131	136	141	146	151
Biz Care Comfort Waist Lowers	4	6	8	10	12	14	16	18	20	22	24	26	28	30
Biz Care Scrub Pant	XXS	XS	XS - S	S	M	M - L	L	XL	XL - 2XL	2XL - 3XL	3XL - 4XL	4XL	5XL	
Biz Collection Scrub Pant	XXS	XS - S	S	S - M	M	L	L - XL	XL	XL - 2XL	2XL	2XL - 3XL	3XL		

All measurements provided are approximate body measurements and for reference only. Actual sizing may vary according to the style and fit of the garment. Not all styles are available in all sizes, please refer to Range Guide (p50) for available sizing.

MENS SIZE GUIDE

For your body measurements, please keep the tape measure taut - but not stretched - and follow the guidelines. Get a friend to help if necessary and ensure all measurements are taken from the same side of your body.

For more information on style fits and how to measure, visit www.biz-care.com.



A. CHEST - Measure under your arms and across shoulder blades, around the fullest part of your bust. Hold one finger between body and tape.

B. WAIST - Measure around your natural waistline while holding one finger between body and tape. Measure over shirt at position your pants would normally sit.

Men's Shirts, Polos, Knitwear, Outerwear

Chest (cm)	87	92	97	102	107	112	117	122	127	132	137
Chest (in)	34	36	38	40	42	44	46	48	50	52	54
Shirts and Polos		XS	S	M	L	XL	2XL	3XL	4XL	5XL	
Knitwear and Outerwear		XS	S	M	L	XL	2XL	3XL	4XL	5XL	

Men's Scrub Tops and Lab Coat

Chest (cm)	87	92	97	102	107	112	117	122	127	132	137
Chest (in)	34	36	38	40	42	44	46	48	50	52	54
Men's Scrub Tops		XS	S	M	L	XL	XL -2XL	3XL	4XL	5XL	
Unisex Scrub Tops		XS	S	M	L	XL	2XL	3XL		5XL	
Unisex Lab Coat		XS	S	M	L	XL	2XL	3XL		5XL	

Men's Pants, Shorts and Scrub Pants

Waist (cm)	72	77	82	87	92	97	102	107	112	117	122	127
Waist (in)	28	30	32	34	36	38	40	42	44	46	48	50
Biz Care Comfort Waist Lowers	72	77	82	87	92	97	102	107	112	117	122	127
Men's Scrub Pants		XS	S	M	L	XL	2XL	3XL	4XL		5XL	
Unisex Scrub Pants		XS	S	M	L	XL	2XL	3XL		5XL		

All measurements provided are approximate body measurements and for reference only. Actual sizing may vary according to the style and fit of the garment. Not all styles are available in all sizes, please refer to Range Guide (p50) for available sizing.

WOMENS SHIRTS, TOPS AND POLOS



Easy Stretch 3/4 Sleeve Shirt	
Style	CS951LT ●
Sizes	4 - 30
Colours	Navy
Page	5, 17



Easy Stretch S/S Shirt	
Style	CS947LS ●
Sizes	4 - 30
Colours	Navy
Page	5, 17



Easy Stretch Tunic	
Style	CS949LS ●
Sizes	4 - 30
Colours	Navy
Page	5, 17



Daisy Print Easy Stretch S/S Shirt	
Style	CS948LS ●
Sizes	4 - 30
Colours	Navy
Page	19



Daisy Print Easy Stretch Tunic	
Style	CS950LS ●
Sizes	4 - 30
Colours	Navy
Page	19



Jersey S/S T-Top	
Style	CS952LS ●
Sizes	XXS - 4XL
Colours	Navy
Page	21



Oasis 3/4 Sleeve Shirt	
Style	LB3600 ●
Sizes	6 - 26
Colours	Navy
Page	22



Oasis S/S Shirt	
Style	LB3601 ●
Sizes	6 - 26
Colours	Navy
Page	22



Monaco 3/4 Sleeve Shirt	
Style	S770LT ●
Sizes	6 - 26
Colours	Ink
Page	23



Monaco S/S Shirt	
Style	S770LS ●
Sizes	6 - 26
Colours	Ink
Page	23



Crew Polo	
Style	P400LS ●
Sizes	8 - 24
Colours	Navy
Page	39



Easy Stretch 3/4 Sleeve Shirt	
Style	CS951LT ●
Sizes	4 - 30
Colours	Electric Blue
Page	17



Easy Stretch S/S Shirt	
Style	CS947LS ●
Sizes	4 - 30
Colours	Electric Blue
Page	9, 17



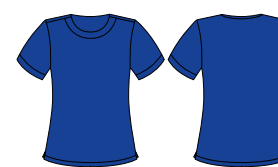
Easy Stretch Tunic	
Style	CS949LS ●
Sizes	4 - 30
Colours	Electric Blue
Page	9, 17



Daisy Print Easy Stretch S/S Shirt	
Style	CS948LS ●
Sizes	4 - 30
Colours	Electric Blue
Page	19



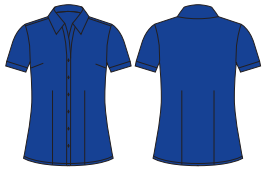
Daisy Print Easy Stretch Tunic	
Style	CS950LS ●
Sizes	4 - 30
Colours	Electric Blue
Page	19



Jersey S/S T-Top	
Style	CS952LS ●
Sizes	XXS - 4XL
Colours	Electric Blue
Page	9, 21

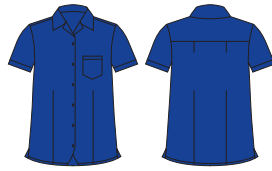


Oasis 3/4 Sleeve Shirt	
Style	LB3600 ●
Sizes	6 - 26
Colours	Electric Blue
Page	22



Oasis S/S Shirt

Style	LB3601	●
Sizes	6 - 26	
Colours	Electric Blue	
Page	22	



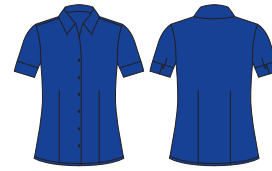
Oasis Overblouse

Style	S265LS	●
Sizes	6 - 30	
Colours	Electric Blue	
Page	22	



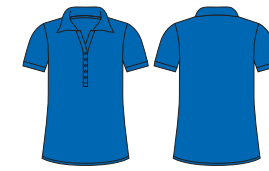
Monaco 3/4 Sleeve Shirt

Style	S770LT	●
Sizes	6 - 26	
Colours	Electric Blue	
Page	23	



Monaco S/S Shirt

Style	S770LS	●
Sizes	6 - 26	
Colours	Electric Blue	
Page	23	



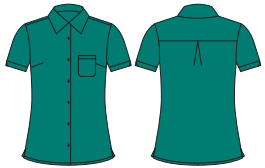
Crew Polo

Style	P400LS	●
Sizes	8 - 24	
Colours	Royal	
Page	39	



Easy Stretch 3/4 Sleeve Shirt

Style	CS951LT	●
Sizes	4 - 30	
Colours	Teal	
Page	17	



Easy Stretch S/S Shirt

Style	CS947LS	●
Sizes	4 - 30	
Colours	Teal	
Page	17	



Easy Stretch Tunic

Style	CS949LS	●
Sizes	4 - 30	
Colours	Teal	
Page	17	



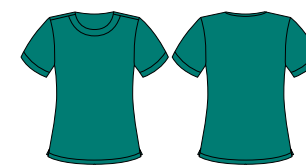
Daisy Print Easy Stretch S/S Shirt

Style	CS948LS	●
Sizes	4 - 30	
Colours	Teal	
Page	19	



Daisy Print Easy Stretch Tunic

Style	CS950LS	●
Sizes	4 - 30	
Colours	Teal	
Page	6, 19	



Jersey S/S T-Top

Style	CS952LS	●
Sizes	XXS - 4XL	
Colours	Teal	
Page	21	



Oasis 3/4 Sleeve Shirt

Style	LB3600	●
Sizes	6 - 26	
Colours	Teal	
Page	22	



Oasis S/S Shirt

Style	LB3601	●
Sizes	6 - 26	
Colours	Teal	
Page	22	



Oasis Overblouse

Style	S265LS	●
Sizes	6 - 30	
Colours	Teal	
Page	22	



Monaco 3/4 Sleeve Shirt

Style	S770LT	●
Sizes	6 - 26	
Colours	Teal	
Page	23	



Monaco S/S Shirt

Style	S770LS	●
Sizes	6 - 26	
Colours	Teal	
Page	23	



Crew Polo

Style	P400LS	●
Sizes	8 - 24	
Colours	Teal	
Page	6, 39	

WOMENS SHIRTS, TOPS AND POLOS



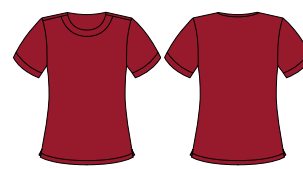
Easy Stretch 3/4 Sleeve Shirt	
Style	CS951LT ●
Sizes	4 - 30
Colours	Cherry
Page	13, 17



Easy Stretch S/S Shirt	
Style	CS947LS ●
Sizes	4 - 30
Colours	Cherry
Page	13, 17



Easy Stretch Tunic	
Style	CS949LS ●
Sizes	4 - 30
Colours	Cherry
Page	13, 17



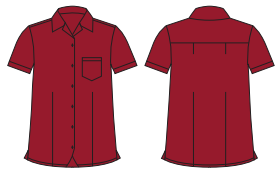
Jersey S/S T-Top	
Style	CS952LS ●
Sizes	XXS - 4XL
Colours	Cherry
Page	21



Oasis 3/4 Sleeve Shirt	
Style	LB3600 ●
Sizes	6 - 26
Colours	Cherry
Page	22



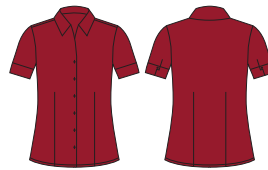
Oasis S/S Shirt	
Style	LB3601 ●
Sizes	6 - 26
Colours	Cherry
Page	22



Oasis Overblouse	
Style	S265LS ●
Sizes	6 - 30
Colours	Cherry
Page	22



Monaco 3/4 Sleeve Shirt	
Style	S770LT ●
Sizes	6 - 26
Colours	Cherry
Page	23



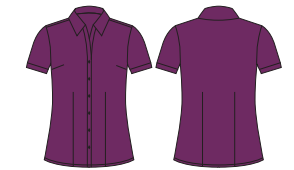
Monaco S/S Shirt	
Style	S770LS ●
Sizes	6 - 26
Colours	Cherry
Page	23



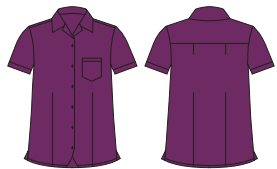
Crew Polo	
Style	P400LS ●
Sizes	8 - 24
Colours	Red
Page	13, 39



Oasis 3/4 Sleeve Shirt	
Style	LB3600 ●
Sizes	6 - 26
Colours	Grape
Page	22



Oasis S/S Shirt	
Style	LB3601 ●
Sizes	6 - 26
Colours	Grape
Page	22



Oasis Overblouse	
Style	S265LS ●
Sizes	6 - 30
Colours	Grape
Page	14, 22



Crew Polo	
Style	P400LS ●
Sizes	8 - 24
Colours	Purple
Page	39



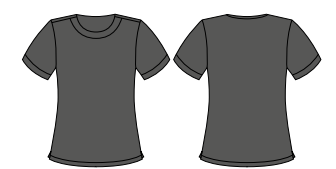
Easy Stretch 3/4 Sleeve Shirt	
Style	CS951LT ●
Sizes	4 - 30
Colours	Charcoal
Page	17



Easy Stretch S/S Shirt	
Style	CS947LS ●
Sizes	4 - 30
Colours	Charcoal
Page	10, 17



Easy Stretch Tunic	
Style	CS949LS ●
Sizes	4 - 30
Colours	Charcoal
Page	17

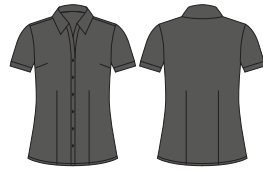


Jersey S/S T-Top	
Style	CS952LS ●
Sizes	XXS - 4XL
Colours	Charcoal
Page	10, 21



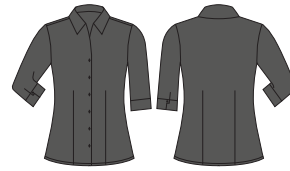
Oasis 3/4 Sleeve Shirt

Style	LB3600	●
Sizes	6 - 26	
Colours	Charcoal	
Page	22	



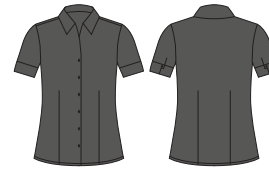
Oasis S/S Shirt

Style	LB3601	●
Sizes	6 - 26	
Colours	Charcoal	
Page	22	



Monaco 3/4 Sleeve Shirt

Style	S770LT	●
Sizes	6 - 26	
Colours	Platinum	
Page	23	



Monaco S/S Shirt

Style	S770LS	●
Sizes	6 - 26	
Colours	Platinum	
Page	23	



Crew Polo

Style	P400LS	●
Sizes	8 - 24	
Colours	Charcoal	
Page	10, 39	



Crew Polo

Style	P400LS	●
Sizes	8 - 24	
Colours	Black	
Page	39	



Zen Tunic

Style	H134LS	●
Sizes	6 - 20	
Colours	Black	
Page	41	



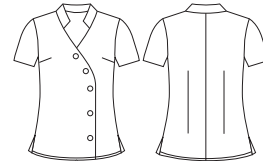
Zen Tunic

Style	H134LS	●
Sizes	6 - 20	
Colours	Black/White	
Page	41	



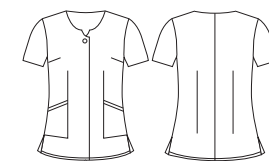
Eden Tunic

Style	H133LS	●
Sizes	6 - 20	
Colours	Black	
Page	41	



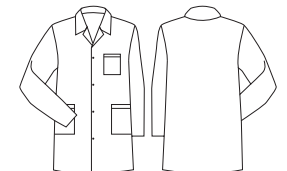
Zen Tunic

Style	H134LS	●
Sizes	6 - 20	
Colours	White	
Page	41	



Eden Tunic

Style	H133LS	●
Sizes	6 - 20	
Colours	White	
Page	41	



Unisex Lab Coat

Style	H132ML	●
Sizes	XS - 3XL, 5XL	
Colours	White	
Page	40	

WOMENS SCRUBS AND LOWERS



V-Neck Easy Fit Scrub Top

Style	CST941LS	●
Sizes	S - 5XL	
Colours	Navy	
Page	33	



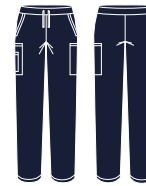
Round Neck Tailored Fit Scrub Top

Style	CST942LS	●
Sizes	XXS - 3XL	
Colours	Navy	
Page	31, 33	



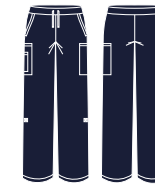
Scrub Top

Style	H10622	●
Sizes	XS - 3XL	
Colours	Navy	
Page	38	



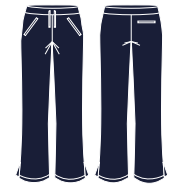
Multi-Pocket Slim Leg Scrub Pant

Style	CSP943LL	●
Sizes	XXS - 3XL	
Colours	Navy	
Page	33	



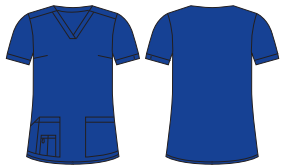
Multi-Pocket Straight Leg Scrub Pant

Style	CSP944LL	●
Sizes	S - 5XL	
Colours	Navy	
Page	33	



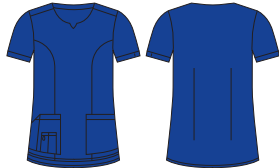
Bootleg Scrub Pant

Style	H10620	●
Sizes	XXS - 3XL	
Colours	Navy	
Page	38	



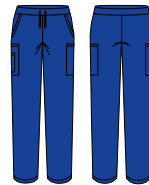
V-Neck Easy Fit Scrub Top

Style	CST941LS	●
Sizes	S - 5XL	
Colours	Electric Blue	
Page	33	



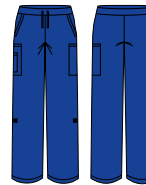
Round Neck Tailored Fit Scrub Top

Style	CST942LS	●
Sizes	XXS - 3XL	
Colours	Electric Blue	
Page	9, 33	



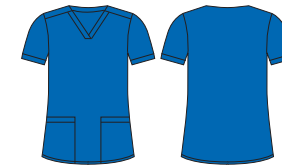
Multi-Pocket Slim Leg Scrub Pant

Style	CSP943LL	●
Sizes	XXS - 3XL	
Colours	Electric Blue	
Page	33	



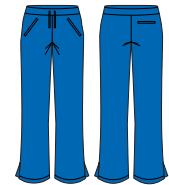
Multi-Pocket Straight Leg Scrub Pant

Style	CSP944LL	●
Sizes	S - 5XL	
Colours	Electric Blue	
Page	9, 33	



Scrub Top

Style	H10622	●
Sizes	XS - 3XL	
Colours	Royal	
Page	38	



Bootleg Scrub Pant

Style	H10620	●
Sizes	XXS - 3XL	
Colours	Royal	
Page	38	



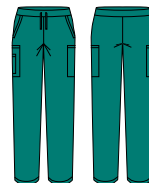
V-Neck Easy Fit Scrub Top

Style	CST941LS	●
Sizes	S - 5XL	
Colours	Teal	
Page	33	



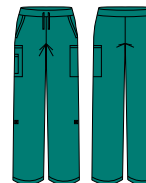
Round Neck Tailored Fit Scrub Top

Style	CST942LS	●
Sizes	XXS - 3XL	
Colours	Teal	
Page	30, 33	



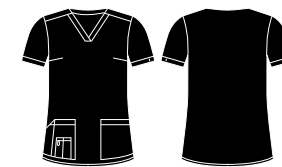
Multi-Pocket Slim Leg Scrub Pant

Style	CSP943LL	●
Sizes	XXS - 3XL	
Colours	Teal	
Page	30, 33	



Multi-Pocket Straight Leg Scrub Pant

Style	CSP944LL	●
Sizes	S - 5XL	
Colours	Teal	
Page	33	



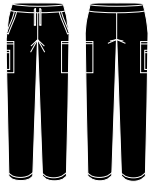
V-Neck Easy Fit Scrub Top

Style	CST941LS	●
Sizes	S - 5XL	
Colours	Black	
Page	14, 33	



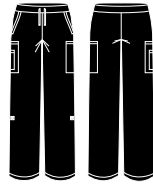
Round Neck Tailored Fit Scrub Top

Style	CST942LS	●
Sizes	XXS - 3XL	
Colours	Black	
Page	33	



Multi-Pocket Slim Leg Scrub Pant

Style	CSP943LL ●
Sizes	XXS - 3XL
Colours	Black
Page	14, 33



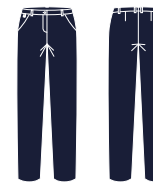
Multi-pocket Straight Leg Scrub Pant

Style	CSP944LL ●
Sizes	S - 5XL
Colours	Black
Page	33



Comfort Waist Slim Leg Pant

Style	CL953LL ●
Sizes	4 - 20
Colours	Navy
Page	27



Comfort Waist Straight Leg Pant

Style	CL955LL ●
Sizes	8 - 30
Colours	Navy
Page	5, 27



Comfort Waist Cargo Pant

Style	CL954LL ●
Sizes	4 - 30
Colours	Navy
Page	5, 27



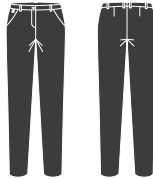
Comfort Waist Cargo Skirt

Style	CL956LS ●
Sizes	4 - 30
Colours	Navy
Page	5, 27



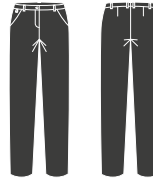
Comfort Waist Cargo Short

Style	CL957LS ●
Sizes	4 - 20
Colours	Navy
Page	27



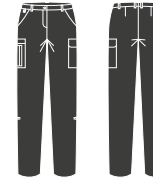
Comfort Waist Slim Leg Pant

Style	CL953LL ●
Sizes	4 - 20
Colours	Charcoal
Page	6, 9, 27



Comfort Waist Straight Leg Pant

Style	CL955LL ●
Sizes	8 - 30
Colours	Charcoal
Page	6, 27



Comfort Waist Cargo Pant

Style	CL954LL ●
Sizes	4 - 30
Colours	Charcoal
Page	6, 27



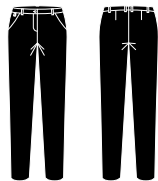
Comfort Waist Cargo Skirt

Style	CL956LS ●
Sizes	4 - 30
Colours	Charcoal
Page	6, 9, 27



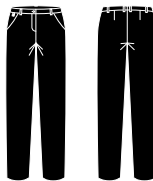
Comfort Waist Cargo Short

Style	CL957LS ●
Sizes	4 - 20
Colours	Charcoal
Page	27



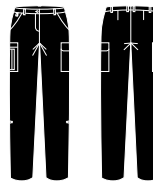
Comfort Waist Slim Leg Pant

Style	CL953LL ●
Sizes	4 - 20
Colours	Black
Page	10, 13, 27



Comfort Waist Straight Leg Pant

Style	CL955LL ●
Sizes	8 - 30
Colours	Black
Page	13, 14, 27



Comfort Waist Cargo Pant

Style	CL954LL ●
Sizes	4 - 30
Colours	Black
Page	13, 27



Comfort Waist Cargo Skirt

Style	CL956LS ●
Sizes	4 - 30
Colours	Black
Page	10, 27



Comfort Waist Cargo Short

Style	CL957LS ●
Sizes	4 - 20
Colours	Black
Page	13, 27

WOMENS KNITWEAR AND OUTERWEAR

● BIZ CARE ● BIZ COLLECTION



Zip Front S/S Knit

Style	CK962LC	●
Sizes	XXS - 4XL	
Colours	Navy	
Page	43	



Button Front Knit Vest

Style	CK961LV	●
Sizes	XXS - 4XL	
Colours	Navy	
Page	43	



2 Way Zip Cardigan

Style	LC3505	●
Sizes	S - 4XL	
Colours	Navy	
Page	44	



Milano Vest

Style	LV619L	●
Sizes	XS - 3XL	
Colours	Navy	
Page	45	



Geneva Jacket

Style	J307L	●
Sizes	S - 2XL	
Colours	Navy/Graphite	
Page	46	



Geneva Vest

Style	J404L	●
Sizes	S - 2XL	
Colours	Navy/Graphite	
Page	46	



Micro Fleece Jacket

Style	PF631	●
Sizes	8 - 24	
Colours	Navy	
Page	47	



Micro Fleece Vest

Style	PF905	●
Sizes	8 - 24	
Colours	Navy	
Page	47	



Zip Front S/S Knit

Style	CK962LC	●
Sizes	XXS - 4XL	
Colours	Charcoal	
Page	6, 43	



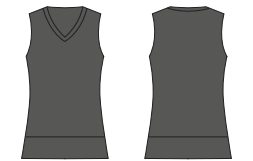
Button Front Knit Vest

Style	CK961LV	●
Sizes	XXS - 4XL	
Colours	Charcoal	
Page	9, 43	



2 Way Zip Cardigan

Style	LC3505	●
Sizes	S - 4XL	
Colours	Charcoal	
Page	44	



Milano Vest

Style	LV619L	●
Sizes	XS - 3XL	
Colours	Charcoal	
Page	45	



2 Way Zip Cardigan

Style	LC3505	●
Sizes	S - 4XL	
Colours	Black	
Page	44	



Milano Vest

Style	LV619L	●
Sizes	XS - 3XL	
Colours	Black	
Page	45	



Geneva Jacket

Style	J307L	●
Sizes	S - 2XL	
Colours	Black/Graphite	
Page	46	



Geneva Vest

Style	J404L	●
Sizes	S - 2XL	
Colours	Black/Graphite	
Page	46	



Micro Fleece Jacket

Style	PF631	●
Sizes	8 - 24	
Colours	Black	
Page	47	



Micro Fleece Vest

Style	PF905	●
Sizes	8 - 24	
Colours	Black	
Page	47	

MENS SHIRTS AND POLOS

● BIZ CARE ● BIZ COLLECTION



Oasis S/S Shirt

Style	SH3603	●
Sizes	S - 3XL, 5XL	
Colours	Navy	
Page	22	



Monaco S/S Shirt

Style	S770MS	●
Sizes	XS - 5XL	
Colours	Ink	
Page	5, 23	



Crew Polo

Style	P400MS	●
Sizes	S - 3XL, 5XL	
Colours	Navy	
Page	39	



Oasis S/S Shirt

Style	SH3603	●
Sizes	S - 3XL, 5XL	
Colours	Electric Blue	
Page	22	



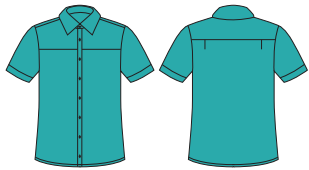
Monaco S/S Shirt

Style	S770MS	●
Sizes	XS - 5XL	
Colours	Electric Blue	
Page	23	



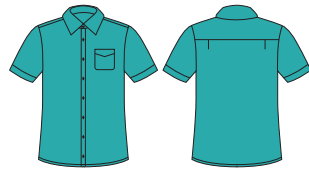
Crew Polo

Style	P400MS	●
Sizes	S - 3XL, 5XL	
Colours	Royal	
Page	39	



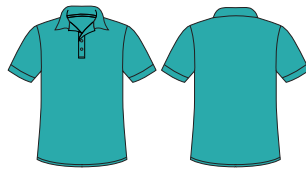
Oasis S/S Shirt

Style	SH3603	●
Sizes	S - 3XL, 5XL	
Colours	Teal	
Page	6, 22	



Monaco S/S Shirt

Style	S770MS	●
Sizes	XS - 5XL	
Colours	Teal	
Page	23	



Crew Polo

Style	P400MS	●
Sizes	S - 3XL, 5XL	
Colours	Teal	
Page	39	



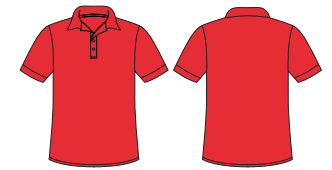
Oasis S/S Shirt

Style	SH3603	●
Sizes	S - 3XL, 5XL	
Colours	Cherry	
Page	22	



Monaco S/S Shirt

Style	S770MS	●
Sizes	XS - 5XL	
Colours	Cherry	
Page	23	



Crew Polo

Style	P400MS	●
Sizes	S - 3XL, 5XL	
Colours	Red	
Page	13, 39	



Oasis S/S Shirt

Style	SH3603	●
Sizes	S - 3XL, 5XL	
Colours	Grape	
Page	14, 22	



Crew Polo

Style	P400MS	●
Sizes	S - 3XL, 5XL	
Colours	Purple	
Page	39	



Oasis S/S Shirt

Style	SH3603	●
Sizes	S - 3XL, 5XL	
Colours	Charcoal	
Page	22	



Monaco S/S Shirt

Style	S770MS	●
Sizes	XS - 5XL	
Colours	Platinum	
Page	23	



Crew Polo

Style	P400MS	●
Sizes	S - 3XL, 5XL	
Colours	Charcoal	
Page	39	

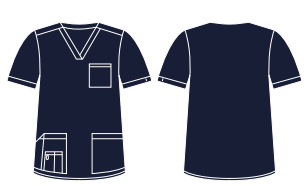


Crew Polo

Style	P400MS	●
Sizes	S - 3XL, 5XL	
Colours	Black	
Page	39	

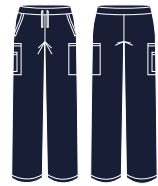
MENS SCRUBS

● BIZ CARE ● BIZ COLLECTION



V-Neck Scrub Top

Style	CST945MS ●
Sizes	XS - 5XL
Colours	Navy
Page	35



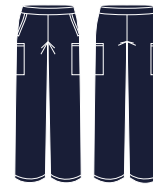
Multi-Pocket Scrub Pant

Style	CSP946ML ●
Sizes	XS - 5XL
Colours	Navy
Page	35



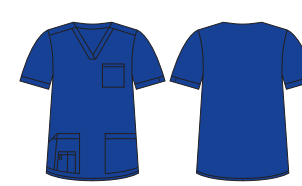
Unisex Scrub Top

Style	H10612 ●
Sizes	XS - 3XL, 5XL
Colours	Navy
Page	38



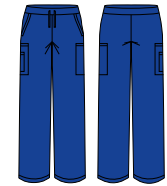
Unisex Scrub Pant

Style	H10610 ●
Sizes	XS - 3XL, 5XL
Colours	Navy
Page	38



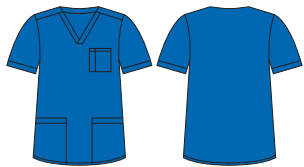
V-Neck Scrub Top

Style	CST945MS ●
Sizes	XS - 5XL
Colours	Electric Blue
Page	9, 35



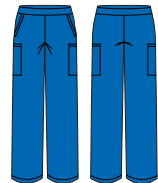
Multi-Pocket Scrub Pant

Style	CSP946ML ●
Sizes	XS - 5XL
Colours	Electric Blue
Page	9, 35



Unisex Scrub Top

Style	H10612 ●
Sizes	XS - 3XL, 5XL
Colours	Royal
Page	38



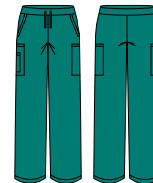
Unisex Scrub Pant

Style	H10610 ●
Sizes	XS - 3XL, 5XL
Colours	Royal
Page	38



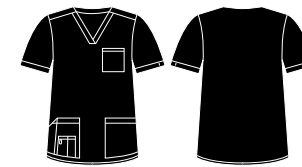
V-Neck Scrub Top

Style	CST945MS ●
Sizes	XS - 5XL
Colours	Teal
Page	30, 35



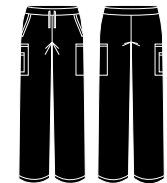
Multi-Pocket Scrub Pant

Style	CSP946ML ●
Sizes	XS - 5XL
Colours	Teal
Page	30, 35



V-Neck Scrub Top

Style	CST945MS ●
Sizes	XS - 5XL
Colours	Black
Page	35



Multi-Pocket Scrub Pant

Style	CSP946ML ●
Sizes	XS - 5XL
Colours	Black
Page	35



Unisex Lab Coat

Style	H132ML ●
Sizes	XS - 3XL, 5XL
Colours	White
Page	40

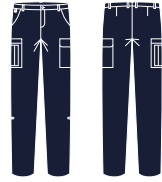
MENS LOWERS

● BIZ CARE ● BIZ COLLECTION



Comfort Waist Flat Front Pant

Style	CL958ML	●
Sizes	72R - 127R	
Colours	Navy	
Page	29	



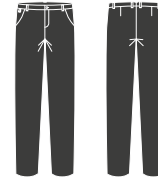
Comfort Waist Cargo Pant

Style	CL959ML	●
Sizes	72R - 127R	
Colours	Navy	
Page	5, 29	



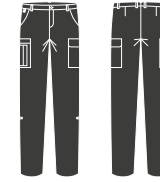
Comfort Waist Cargo Short

Style	CL960MS	●
Sizes	72R - 127R	
Colours	Navy	
Page	29	



Comfort Waist Flat Front Pant

Style	CL958ML	●
Sizes	72R - 127R	
Colours	Charcoal	
Page	6, 29	



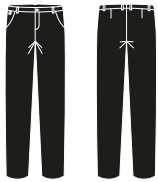
Comfort Waist Cargo Pant

Style	CL959ML	●
Sizes	72R - 127R	
Colours	Charcoal	
Page	29	



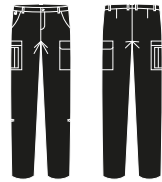
Comfort Waist Cargo Short

Style	CL960MS	●
Sizes	72R - 127R	
Colours	Charcoal	
Page	29	



Comfort Waist Flat Front Pant

Style	CL958ML	●
Sizes	72R - 127R	
Colours	Black	
Page	29	



Comfort Waist Cargo Pant

Style	CL959ML	●
Sizes	72R - 127R	
Colours	Black	
Page	29	



Comfort Waist Cargo Short

Style	CL960MS	●
Sizes	72R - 127R	
Colours	Black	
Page	13, 14, 29	

MENS KNITWEAR AND OUTERWEAR

● BIZ CARE ● BIZ COLLECTION



Milano Vest

Style	WV619M ●
Sizes	XS - 3XL, 5XL
Colours	Navy
Page	45



Geneva Jacket

Style	J307M ●
Sizes	S - 3XL, 5XL
Colours	Navy/Graphite
Page	46



Geneva Vest

Style	J404M ●
Sizes	S - 3XL, 5XL
Colours	Navy/Graphite
Page	46



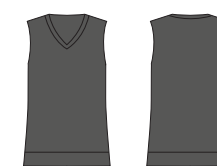
Micro Fleece Jacket

Style	PF630 ●
Sizes	XS - 3XL, 5XL
Colours	Navy
Page	47



Micro Fleece Vest

Style	F233MN ●
Sizes	XS - 3XL, 5XL
Colours	Navy
Page	47



Milano Vest

Style	WV619M ●
Sizes	XS - 3XL, 5XL
Colours	Charcoal
Page	45



Milano Vest

Style	WV619M ●
Sizes	XS - 3XL, 5XL
Colours	Black
Page	45



Geneva Jacket

Style	J307M ●
Sizes	S - 3XL, 5XL
Colours	Black/Graphite
Page	46



Geneva Vest

Style	J404M ●
Sizes	S - 3XL, 5XL
Colours	Black/Graphite
Page	46



Micro Fleece Jacket

Style	PF630 ●
Sizes	XS - 3XL, 5XL
Colours	Black
Page	47



Micro Fleece Vest

Style	F233MN ●
Sizes	XS - 3XL, 5XL
Colours	Black
Page	47

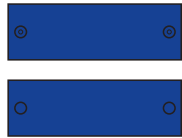
The Information contained in this catalogue has been compiled and presented with all due care and is considered to be true and correct at the time of publication.

Colours are reproduced as closely as possible, but may differ slightly from actual products due to printing processes and paper composition.

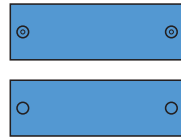
Please refer to www.biz-care.com for the latest up-to-date products and information.

BIZ CARE – SCRUB IDENTIFIERS

● BIZ CARE ● BIZ COLLECTION



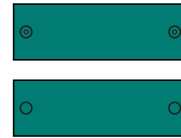
Scrub Identifier	
Style	CID940U ●
Colours	Electric Blue
Page	36



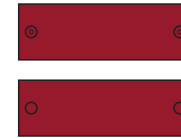
Scrub Identifier	
Style	CID940U ●
Colours	Mid Blue
Page	36



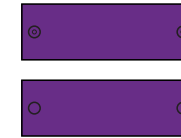
Scrub Identifier	
Style	CID940U ●
Colours	Cyan
Page	36



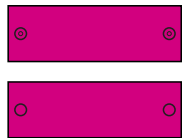
Scrub Identifier	
Style	CID940U ●
Colours	Teal
Page	36



Scrub Identifier	
Style	CID940U ●
Colours	Cherry
Page	36



Scrub Identifier	
Style	CID940U ●
Colours	Grape
Page	14, 36



Scrub Identifier	
Style	CID940U ●
Colours	Fuchsia
Page	36



Scrub Identifier	
Style	CID940U ●
Colours	Lime Green
Page	36



A smiling man with short brown hair and a light beard, wearing a bright blue V-neck scrub top. He is standing against a plain, light-colored background. The image is a full-body shot, but the focus is on his upper body and face.

bizcare

WWW.BIZ-CARE.COM

THANK YOU ♥ FOR CARING

